

LAND CORNER RECORDATION CERTIFICATE
Filing Requirement of Act 74, Mich. P.A. 1970

For corners in

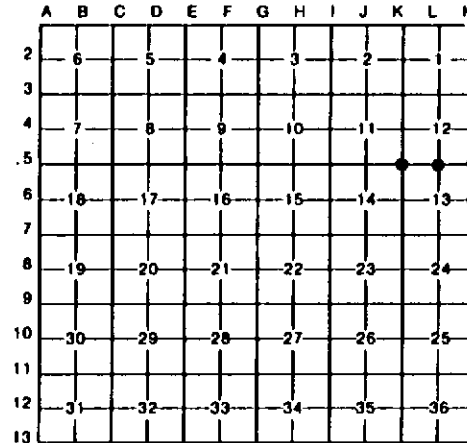
Table with columns: Menominee (County), Located In, Corner Code. Rows include Public Land Survey, Property Controlling in Section, and Miscellaneous Property in Sec.

Register of Deeds Stamp & File Number

4. Lot No. , Recorded Plat
5. Private Claims

I, Paul Bressette, in a field survey on June 7, 1993, do hereby certify that under requirements of P.A. 74, Michigan P.A. of 1970, the corner points mentioned in lines 1 and 2 above were in conformance with regulations and rules therefor as required in the current manual of survey instructions of the United States Department of the Interior, Bureau of Land Management or by a decree of a Court of Law and/or that the corner points mentioned in lines 3, 4 and 5 above were in conformance with the rules of the Michigan Board of Land Surveyors or by a Decree of a Court of Law; established, re-established, monumented, re-monumented, recovered, found as expressed below:

NOTE: Not more than 4 corners, all in the same town and range, may be recorded on this certificate.



A. Description of original monument and accessories and/or subsequent restoration:

- K-5 Section Corner common to Sections 11, 12, 13 and 14. 1852: Francis Coleman, D.S. Set wood post witnessed by: Cedar 10 N45°E 9 links; Cedar 10 S48°W 27 links.
L-5 Quarter Corner common to Sections 12 and 13. 1852: Francis Coleman, D.S. Set wood post witnessed by: Sugar 12 N58°E 23 links; Sugar 6 S15°W 13 links.
M-5 Section Corner common to Sections 12, 13, 7 and 18. 1848: James H. Mullett, D.S. Set wood post witnessed by: Hemlock 18 N60°W 07 links; Beech 8 S88 1/2°W 33 links.
M-6 Quarter Corner common to Sections 13 and 18. 1848: James H. Mullett, D.S. Set wood post witnessed by: Sugar 10 S59°W 25 links; Sugar 10 N13°W 17 links.

B. Description of corner evidence found and/or method applied in restoring or reestablishing corner:

- K-5 No evidence of original survey or restoration found. Corner position re-established at the intersection of the centerline of county road and ancient fenceline north. This position matches very well with fencelines to the west and when used to set the Quarter Corner to the east an old fence rail was found below the pavement when setting the monument.
L-5 No evidence of original survey or restoration found. Corner position re-established mid-point and on-line between the Northeast and Northwest Corners of Section 13. When setting monument, found iron fence rail about 2 feet below road surface in essentially the same position.
M-5 No evidence of original survey or restoration found. Corner position re-established at intersection of ancient fenceline north, centerline of county road west, and splitting fencelines for centerline of county road R/W to south. When used to set Quarter Corner to the west an old fence rail was found below the pavement when setting the monument.
M-6 No evidence of original survey or restoration found. Corner position re-established at the intersection of ancient fenceline west and west and splitting fencelines for the centerline of the county road R/W north and south.

C. Description of monument for corner and accessories established to perpetuate localing the position of the corner:

Table with columns: K-5 Menominee Co. Mon., L-5 Menominee Co. Mon., M-5 DNR Monument, M-6 DNR Monument. Lists monument types and measurements for each corner.



Paul R. Bressette

Date 9-28-93

37270