

LAND CORNER RECORDATION CERTIFICATE
Filing Requirement of Act 74, Mich. P.A. 1970

For corners in

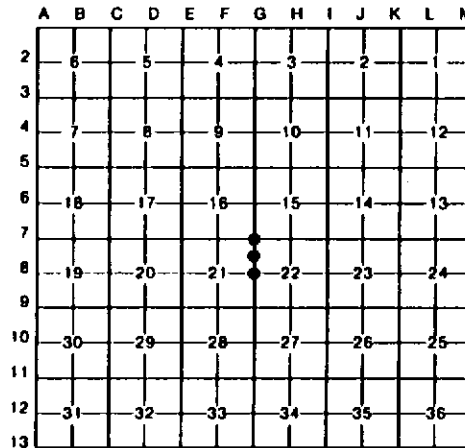
Table with columns: Menominee (County), Located In, Corner Code. Rows include Public Land Survey, Property Controlling in Section, and Miscellaneous Property in Sec.

Register of Deeds Stamp & File Number

- 4. Lot No. Recorded Plat
5. Private Claims

I, Paul Bressette, in a field survey on June 3, 1993, do hereby certify that under requirements of P.A. 74, Michigan P.A. of 1970, the corner points mentioned in lines 1 and 2 above were in conformance with regulations and rules therefore as required in the current manual of survey instructions of the United States Department of the Interior, Bureau of Land Management or by a decree of a Court of Law and/or that the corner points mentioned in lines 3, 4 and 5 above were in conformance with the rules of the Michigan Board of Land Surveyors or by a Decree of a Court of Law; established, re-established, monumented, re-monumented, recovered, found as expressed below:

NOTE: Not more than 4 corners, all in the same town and range, may be recorded on this certificate.



A. Description of original monument and accessories and/or subsequent restoration:

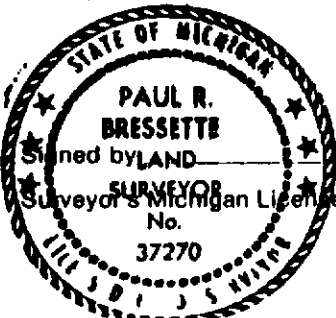
- G-7 Section Corner common to Sections 15, 16, 21 and 22. Francis Coleman, D.S. 1852. Set wood post witnessed by Beech 12 N70°W 31 links; Beech 12 S20°E 36 links.
G-8 Quarter Corner common to Sections 21 and 22. 1852; Francis Coleman, D.S. Set wood post witnessed by: Sugar 14 N65°E 46 links; Beech 12 S55°W 47 links.
3 North one-sixteenth corner common to Sections 21 and 22. Not set in original survey. No evidence of subsequent establishment.

B. Description of corner evidence found and/or method applied in restoring or reestablishing corner:

- G-7 No evidence of original survey or restoration found. Corner position re-established at intersection of centerlines of County Road north and west. This position matches with existing occupation and long established fences to the north and south.
G-8 No evidence of original survey or restoration found. The distance along the section line was found to be substantially longer than record (5271.42' GLO, 5354.42' meas.). Distance from section corner north to stream call fit fair (968' GLO, 977' meas.) and distance from stream call to stream call fit (937' GLO, 937' meas.). Placing the quarter corner at record distance from stream call resulted in it falling approximately 33' south of a fenceline going west, it didn't line up with a fenceline running south, and would not match with long standing occupation to the north. When one chain was added to the distance in the south half mile and the corner position re-established by single proportion, the corner lined up with the fenceline south, fell about 30' north of fenceline west and in line with north edge of an old road, and matched up with existing occupation to the north. I used the single proportion position to re-establish this corner.
3 Corner position established mid-point and on-line between the Northwest and West Quarter Corners of Section 22.

C. Description of monument for corner and accessories established to perpetuate locating the position of the corner:

Table with columns: G-7 DNR Monument, G-8 DNR Monument, 3 DNR Monument. Lists monument types like H. Maple, Ironwood, Elm, Basswood, Sugar, W. Pine, Apple, Cedar Post with bearings and distances.



Paul R. Bressette Date 9-28-93