

LAND CORNER RECORDATION CERTIFICATE
Filing Requirement of Act 74, Mich. P.A. 1970

For corners in

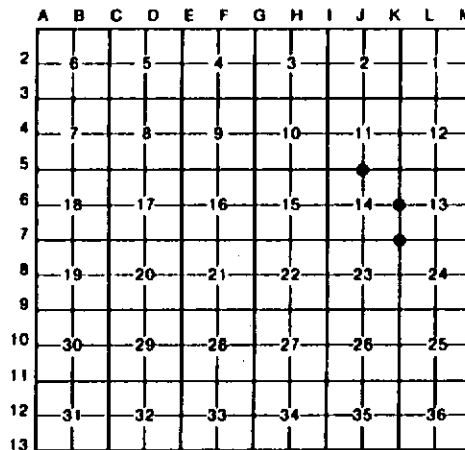
Table with columns: Menominee (County), Located In: (Town, Range, Section), Corner Code. Includes entries for Public Land Survey, Property Controlling in Section, and Miscellaneous Property in Sec.

Register of Deeds Stamp & File Number

4. Lot No. , Recorded Plat
5. Private Claims

I, Paul Bressette, in a field survey on June 1, 1993, do hereby certify that under requirements of P.A. 74, Michigan P.A. of 1970, the corner points mentioned in lines 1 and 2 above were in conformance with regulations and rules therefore as required in the current manual of survey instructions of the United States Department of the Interior, Bureau of Land Management or by a decree of a Court of Law and/or that the corner points mentioned in lines 3, 4 and 5 above were in conformance with the rules of the Michigan Board of Land Surveyors or by a Decree of a Court of Law; established, re-established, monumented, re-monumented, recovered, found as expressed below:

NOTE: Not more than 4 corners, all in the same town and range, may be recorded on this certificate.



A. Description of original monument and accessories and/or subsequent restoration:

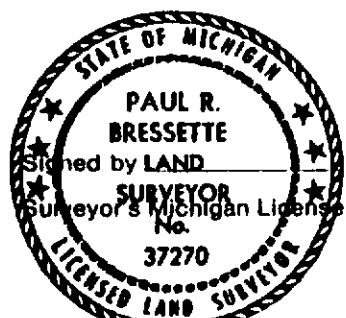
- J-5 Quarter Corner common to Sections 11 and 14. 1852: Francis Coleman, D.S. Set wood post witnessed by: Sugar 10 N42°E 47 links; Hemlock 6 S32°W 22 links.
K-6 Quarter Corner common to Sections 13 and 14. 1852: Francis Coleman, D.S. Set wood post witnessed by: Cedar 12 N06°E 60 links; Cedar 14 S12°W 21 links.
K-7 Section Corner common to Sections 13, 14, 23 and 24. 1852: Francis Coleman, D.S. Set wood post witnessed by: Hemlock 14 N50°E 37 links; Sugar 12 S20°W 45 links

B. Description of corner evidence found and/or method applied in restoring or reestablishing corner:

- J-5 No evidence of original survey or restoration found. Corner position re-established at intersection of centerline of county road east and west and ancient fences north and south. In a conversation with Mr. Henry Sanfthiel, an adjoining landowner and longtime resident, he indicated the fences were in place in 1917 when his father purchased the farm, and were always used as the boundaries.
K-6 No evidence of original survey or restoration found. Corner position re-established mid-point and on-line between the Northeast and Southeast Corners of Section 14. Old wood post N64°W 7' from monument.
K-7 No evidence of original survey or restoration found. Corner position re-established at the intersection of ancient fences west and south. This position is only 3.4 feet off a line between the restored corner 1 mile east and a corner restored from original evidence 1 mile west. These corners were set on a straight line in the original survey, 3.4 feet off line is not unreasonable.

C. Description of monument for corner and accessories established to perpetuate locating the position of the corner:

Table with 3 columns: J-5 Menominee Co., Mon., K-6 DNR Monument, K-7 DNR Monument. Lists monument types (Sugar, Spruce, Power Pole, Cedar, R. Maple, W. Birch, W. Ash, W. Pine) and their bearings and distances.



Signed by LAND SURVEYOR Paul R. Bressette Date 9-28-93
Surveyor's Michigan License No. 37270