

Approved by _____ County
 Land Survey Commission
 Four Corners Under Act 245 of
 P.A. of 1966 On 10/26 1995
Mc Davis RLS
 Chairman

LAND CORNER RECORDATION CERTIFICATE
 Filing Requirement of Act 74, Mich. P.A. 1970

For corners in

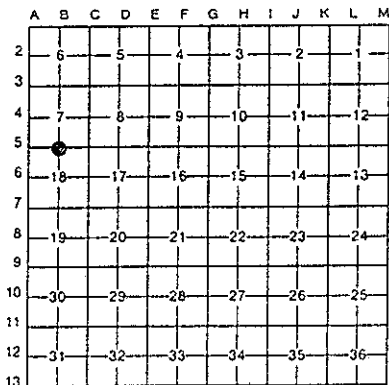
MENOMINEE Located In: Corner Code ##
 (County)

1. Public Land Survey	T <u>36N</u> R <u>26W</u>	B-5
	T _____ R _____	_____
	T _____ R _____	_____
	T _____ R _____	_____
2. Property Controlling in Section	S _____ T _____ R _____	_____
	S _____ T _____ R _____	_____
3. Miscellaneous Property in Sec.	S _____ T _____ R _____	_____
	S _____ T _____ R _____	_____

4. Lot No. _____, Recorded Plat _____
 5. Private Claims _____

95 NOV - 8 AM 11:32
 RECEIVED FOR RECORD
 REGISTER OF DEEDS STAMP & FILE NUMBER
 PAGE 2 249 BR 4
 BARNALUM MONUMENT
 REGISTERED CORNERS
 HERETOFORE 1995

William Lenca in a field survey on Apr 10, 1995
 do hereby certify that under requirements of P.A. 74, Michigan P.A. of 1970, the corner points mentioned in lines 1 and 2 above were in conformance with regulations and rules therefore as required in the current manual of survey instructions of the United States Department of the Interior, Bureau of Land Management or by a decree of a Court of Law and/or that the corner points mentioned in lines 3, 4 and 5 above were in conformance with the rules of the Michigan Board of Land Surveyors or by a Decree of a Court of Law; established, re-established, monumented, re-monumented, recovered, found as expressed below:



NOTE: Not more than 4 corners, all in the same town and range, may be recorded on this certificate.

A. Description of original monument and accessories and/or subsequent restoration:

- 1852: Original Survey by Francis Coleman - B.T.'s - Fir, 8" - N08°E - 27 lks; Cedar, 12" - S33°W - 42 lks. All original evidence has been destroyed by logging activities.
- 1984: L.C.R.C. No. 606 recorded by George E. Wilson, RLS No. 17607, states that no original evidence was found and a HDR Berntsen Aluminum Monument 5' long was set by single proportion. New Tics - Deep 1 magnet - 1' North; Deep 1 magnet 1' East.

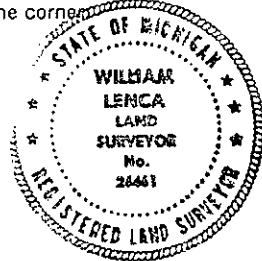
3. Description of corner evidence found and/or method applied in restoring or reestablishing corner:

In a 1995 survey and subdivision of Section 7, T36N - R26W, we located and tied in to the SE and SW Corners of said section and computed a proportional location for the S1/4 Corner (B-5). We then traversed to this location and found Wilson's monument in place as described in part "A". We accepted Wilson's Monument as a careful and faithful reestablishment of the position of the original corner.

2. Description of monument for corner and accessories established to perpetuate locating the position of the corner:

Accepted existing 3/4" x 5' Alum. Pipe/3-1/4" dia. Alum. cap & stamped for corner:

6" dia. Cedar	N53°E	13.88 feet	Scr. NBT
8" dia. Balsam	S23°E	19.16 feet	Scr. NBT
8" dia. Cedar	S36°W	9.91 feet	Scr. NBT
9" dia. Cedar	N70°W	24.69 feet	Scr. NBT
Metal Survey Sign Post	N10°W	1.2 feet	



NOTE: All bearings are magnetic bearings. All distances are measured with a steel tape. Distances to trees are to nail in side of tree.

Signed by William Lenca Date May 24, 1995
 Surveyor's Michigan License No. 26461

SURVEY & RE-MONUMENTATION