

P.A. Of 1990 On 10/20 1995  
Mr. Davis BLS  
Chairman

LAND CORNER RECORDATION CERTIFICATE  
Filing Requirement of Act 74, Mich. P.A. 1970

For corners in

MENOMINEE  
(County)

Located In:

Corner Code ##

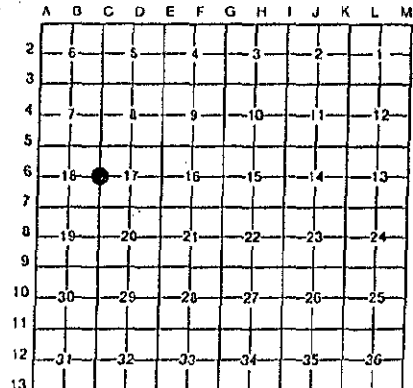
1. Public Land Survey	T	<u>36N</u>	R	<u>26W</u>	<u>C-6</u>
	T		R		
	T		R		
	T		R		
2. Property Controlling in Section	S		T	R	
	S		T	R	
3. Miscellaneous Property in Sec.	S		T	R	
	S		T	R	

RECEIVED FOR RECORD  
95 DEC 27 . PM 3:30  
PAGE # 282 BK 4  
REGISTERED LAND SURVEYOR  
MENOMINEE, MICHIGAN

Register of Deeds Stamp & File Number

4. Lot No. \_\_\_\_\_, Recorded Plat \_\_\_\_\_  
5. Private Claims \_\_\_\_\_

I, William Lenca, in a field survey on Sep. 18, 19 95, do hereby certify that under requirements of P.A. 74, Michigan P.A. of 1970, the corner points mentioned in lines 1 and 2 above were in conformance with regulations and rules therefore as required in the current manual of survey instructions of the United States Department of the Interior, Bureau of Land Management or by a decree of a Court of Law and/or that the corner points mentioned in lines 3, 4 and 5 above were in conformance with the rules of the Michigan Board of Land Surveyors or by a Decree of a Court of Law; established, re-established, monumented, re-monumented, recovered, found as expressed below:



NOTE: Not more than 4 corners, all in the same town and range, may be recorded on this certificate.

A. Description of original monument and accessories and/or subsequent restoration:

1852: Original Survey by Francis Coleman - B.T.'s - Tamarack, 8" - N33°E - 41 lks (no evidence found); Cedar, 10" - S40°W - 96 lks (now a decayed Cedar Stump).

B. Description of corner evidence found and/or method applied in restoring or reestablishing corner:

In a 1995 survey of Section 17, T36N-R26W, we found a 1/2 inch diameter iron pin at a large wood post at the North end of a row of posts running South and at a distance of 2618.82 feet south of the NW Corner of Section 17 (GLO distance = 2640'). In a search of the area surrounding this corner, we found remnants of a decayed Cedar Stump matching the GLO B.T. (Cedar, 10" - S40°W - 96 links). We accepted the position of the 1/2 inch diameter iron as a careful and faithful perpetuation of the position of the original corner.

C. Description of monument for corner and accessories established to perpetuate locating the position of the corner:

Set 2" dia. Aluminum Pipe/3-1/4" dia. Alum cap stamped for corner location:

16" dia. Cedar	S35°E	29.12 feet	Scr. NBT
22" dia. Maple	S50°W	72.90 feet	Scr. NBT
6" dia. White Ash	N10°W	27.99 feet	Scr. NBT
Metal Survey Sign Post	West	1.4 feet	
Nothing else nearby			



NOTE: All bearings are magnetic bearings. All distances are measured with a steel tape. Distances to trees are to nail in side of tree.

Signed by William Lenca Date Oct. 20, 1995

Surveyor's Michigan License No. 26461