

1993

COMMISSION

LAND CORNER RECORDATION CERTIFICATE  
Filing Requirement of Act 74, Mich. P.A. 1970

by Menominee County  
Land Survey Remonumentation  
Peer Group Under Act 345 Of  
P.A. Of 1990 On 12/28 199 93  
Mc Davis  
Chairman

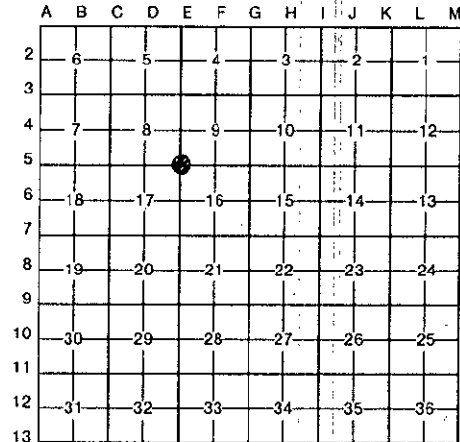
For corners in

<u>MENOMINEE</u> County	Located In:	Corner Code <u>##</u>
1. Public Land Survey	T <u>36N</u> R <u>26W</u>	E-5
	T _____ R _____	_____
	T _____ R _____	_____
2. Property Controlling in Section	S _____ T _____ R _____	_____
	S _____ T _____ R _____	_____
3. Miscellaneous Property in Sec.	S _____ T _____ R _____	_____
	S _____ T _____ R _____	_____

RECEIVED FOR RECORD  
93 DEC 29 PM 3:54  
PAGE # 36 232 4  
BARBARA MORRISON  
REGISTER OF DEEDS  
MENOMINEE, MI 49858  
Register of Deeds Stamp & File Number

- 4. Lot No. \_\_\_\_\_, Recorded Plat \_\_\_\_\_
- 5. Private Claims \_\_\_\_\_

I, William Lenca, in a field survey on October 19, 19 93, do hereby certify that under requirements of P.A. 74, Michigan P.A. of 1970, the corner points mentioned in lines 1 and 2 above were in conformance with regulations and rules therefore as required in the current manual of survey instructions of the United States Department of the Interior, Bureau of Land Management or by a decree of a Court of Law and/or that the corner points mentioned in lines 3, 4 and 5 above were in conformance with the rules of the Michigan Board of Land Surveyors or by a Decree of a Court of Law; established, re-established, monumented, re-monumented, recovered, found as expressed below:



**NOTE: Not more than 4 corners, all in the same town and range, may be recorded on this certificate.**

A. Description of original monument and accessories and/or subsequent restoration:

ORIGINAL B.T.'s  
Cedar, 10", N16°E, 12 lks  
Cedar, 12", S25°W, 29 lks

Original Survey by Francis Coleman in 1852.

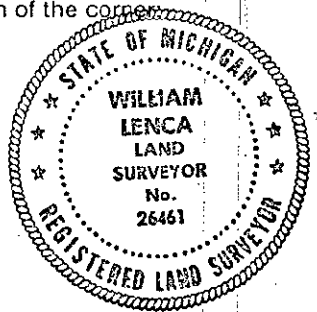
B. Description of corner evidence found and/or method applied in restoring or reestablishing corner:

In a October 1993 survey of Section 16, T36N-R26W, we found a 5" x 6 1/2" rectangular concrete monument in a mound of stones. There is a badly decayed cedar tree which fits the Original B.T. - Cedar, 12", S25°W, 29 lks. The tree is too badly decayed to identify any marks. The corner position fits well with the 1/4 corner to the South and the Northeast Corner, and is accepted as a careful and faithful perpetuation of the position of the original corner.

C. Description of monument for corner and accessories established to perpetuate locating the position of the corner:

Found 5" by 6 1/2" Concrete Monument.

10" dia. Cedar	N13°E	28.90 feet
8" dia. Hemlock	S87°E	22.17 feet
10" dia. Cedar	S14°W	11.90 feet
8" dia. White Pine	N71°W	22.69 feet
Carsonite	S55°E	11.08 feet



NOTE: All bearings are magnetic bearings. All distances are measured with steel tape; distances to trees are to nails in center of tree.

Signed by William Lenca Date Oct. 28, 1993  
Surveyor's Michigan License No. 26461