

1993

COMMISSION

LAND CORNER RECORDATION CERTIFICATE
Filing Requirement of Act 74, Mich. P.A. 1970

Approved by Menominee County
Land Survey Remonumentation
Peer Group Under Act 345 of
P.A. Of 1990 On 12/28 1993
McCrank
Chairman

For corners in

	Located In:	Corner Code #
<u>MENOMINEE</u> <small>(COUNTY)</small>		
1. Public Land Survey	T <u>36N</u> R <u>26W</u>	<u>F-5</u>
	T _____ R _____	_____
	T _____ R _____	_____
	T _____ R _____	_____
2. Property Controlling in Section	S _____ T _____ R _____	_____
	S _____ T _____ R _____	_____
3. Miscellaneous Property in Sec.	S _____ T _____ R _____	_____
	S _____ T _____ R _____	_____
4. Lot No. _____, Recorded Plat _____		
5. Private Claims _____		

RECEIVED FOR RECORD
93 DEC 29 PM 3:44
PAGE # 38 OF 4
BARBARA MORRISON
REGISTER OF DEEDS
MENOMINEE, MI 49855
Register of Deeds Stamp & File Number

I, William Lenca, in a field survey on October 19, 1993, do hereby certify that under requirements of P.A. 74, Michigan P.A. of 1970, the corner points mentioned in lines 1 and 2 above were in conformance with regulations and rules therefore as required in the current manual of survey instructions of the United States Department of the Interior, Bureau of Land Management or by a decree of a Court of Law and/or that the corner points mentioned in lines 3, 4 and 5 above were in conformance with the rules of the Michigan Board of Land Surveyors or by a Decree of a Court of Law; established, re-established, monumented, re-monumented, recovered, found as expressed below:

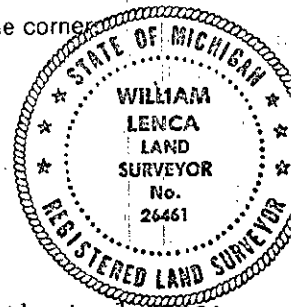
	A	B	C	D	E	F	G	H	I	J	K	L	M
2	6		5		4		3		2		1		
3													
4	7		8		9		10		11		12		
5													
6	18		17		16		15		14		13		
7													
8	19		20		21		22		23		24		
9													
10	30		29		28		27		26		25		
11													
12	31		32		33		34		35		36		
13													

NOTE: Not more than 4 corners, all in the same town and range, may be recorded on this certificate.

A. Description of original monument and accessories and/or subsequent restoration:
ORIGINAL B.T.'s
Cedar, 8", N23°W, 28 lks
Tamarack, 5", S57°E, 2 lks
Original Survey by Francis Coleman in 1852.

B. Description of corner evidence found and/or method applied in restoring or reestablishing corner:
Found no original evidence for this corner position. Set corner on line and midway between the Northeast Corner and the Northwest Corner of Section 16, T36N-R26W. This location is accepted as a careful and faithful reestablishment of the position of the original corner.

C. Description of monument for corner and accessories established to perpetuate locating the position of the corner:
Set 2 1/4" x 30" Cone Monument/3 1/4" dia. Alum. cap stamped for corner:
8" dia. Cedar NORTH 19.63 feet
8" dia. Cedar S60°E 8.67 feet
6" dia. Cedar S30°W 10.09 feet
9" dia. Black Spruce N65°W 12.61 feet
Carsonite Marker N60°W 1.2 feet



NOTE: All bearings are magnetic bearings; all distances are measured with steel tape; all distances to trees are measured to nails in center of tree.

Signed by William Lenca Date October 28, 1993
Surveyor's Michigan License No. 26461