

SURVEY & REMONUMENTATION

FEB 11 1998

Approved by Menominee County
Land Survey Remonumentation
Fee Group Under Act 345 Of

P.A. Of 1990 On 10/31 199 7

Mike Davis 265
Chairman

LAND CORNER RECORDATION CERTIFICATE Filing Requirement of Act 74, Mich. P.A. 1970

SECTION

Section corners in	Located in:	Corner Code #
<u>MENOMINEE</u>		
(County)		
1. Public Land Survey	<u>T36N R 27W</u>	<u>B-13</u>
	<u>T R</u>	<u>B-01</u>
	<u>T35N R 27W</u>	
	<u>T R</u>	
2. Property Controlling in Section	S <u>T R</u>	
	S <u>T R</u>	
3. Miscellaneous Property in Sec.	S <u>T R</u>	
	S <u>T R</u>	

97 NOV 21 PM 3:19
 MICHIGAN STATE BOARD OF PROFESSIONAL SURVEYORS
 REGISTER OF DEEDS STAMP & FILE NUMBER

Register of Deeds Stamp & File Number

4. Lot No. _____, Recorded Plat _____
 5. Private Claims _____
 SAME AS CORNER B-1, T35N-R27W

I, William Lenca, in a field survey on Sept 29, 19 97 do hereby state that under requirements of P.A. 74, Michigan P.A. of 1970, the corner points mentioned in lines 1 and 2 above were in conformance with regulations and rules therefore as required in the current manual of survey instructions of the United States Department of the Interior, Bureau of Land Management or by a decree of a Court of Law and /or that the corner points mentioned in lines 3, 4 and 5 above were in conformance with the rules of the Michigan Board of Land Surveyors or by a Decree of a Court of Law, established, re-established, monumented, recovered, found as expressed below.

NOTE: Not more than 2 corners, all in the same town and range, may be recorded on this certificate.

1	A	B	C	D	E	F	G	H	I	J	K	L	M
2		6		5		4		3		2		1	
3													
4		7		8		9		10		11		12	
5													
6		19		17		16		15		14		13	
7													
8		19		20		21		22		23		24	
9													
10		30		29		28		27		26		25	
11													
12		31		32		33		34		35		36	
13													

A. Description of original monument and accessories and/or subsequent restoration:

1847: Original Survey by H. Floyd - B.T.'s - Hemlock, 9" - N40°E - 14 lks; Sugar, 18" - N53°W - 24 lks. All original evidence for this corner has been destroyed by county road improvements.

B. Description of corner evidence found and/or method applied in restoring or reestablishing corner:

Found existing R.R. Spike in centerline of county roads east - west - north, and in line with old fence to the south. This position fits well with other corners and long standing lines of occupation, and is accepted as the best available evidence of the position of the original corner.

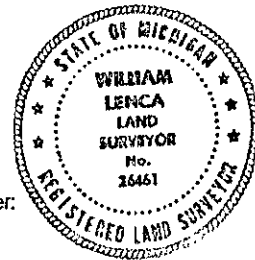
C. Description of monument for corner and accessories established to perpetuate locating the position of the corner:
 Set 5/8" x 24" Iron Rod/3-1/4" dia. Alum. cap stamped for corner location in Monument Box:

5/8" x 24" Iron Rod/2" dia. Alum. cap marked "WITNESS MARKER"	N45°E	52.36 feet	
"x" in top of County Project Marker	South	27.49 feet	
6" dia. Tamarack	N53°W	102.43 feet	Scr. NBT
Metal Survey Sign Post	N45°E	52.76 feet	
Nothing else nearby			

NOTE: All bearings are magnetic bearings. All distances are measured with steel tape. Distances to trees are to nail in side of tree.

Signed by William Lenca
 Surveyor's Michigan License No. 26461

Date Oct. 13, 1997



521