

LAND CORNER RECORDATION CERTIFICATE
Filing Requirement of Act 74, Mich. P.A. 1970

For corners in

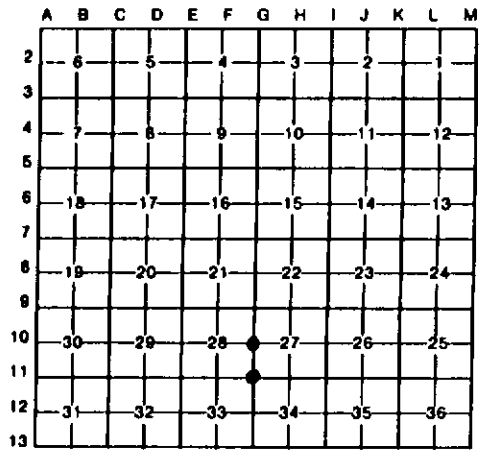
Menominee (County) Located In: Corner Code //
1. Public Land Survey T 36N R 28W G-10, G-11
2. Property Controlling in Section S T R
3. Miscellaneous Property in Sec. S T R

Register of Deeds Stamp & File Number

4. Lot No. , Recorded Plat
5. Private Claims

I, Paul R. Bressette, in a field survey on November, 19 94, do hereby certify that under requirements of P.A. 74, Michigan P.A. of 1970, the corner points mentioned in lines 1 and 2 above were in conformance with regulations and rules therefore as required in the current manual of survey instructions of the United States Department of the Interior, Bureau of Land Management or by a decree of a Court of Law and/or that the corner points mentioned in lines 3, 4 and 5 above were in conformance with the rules of the Michigan Board of Land Surveyors or by a Decree of a Court of Law; established, re-established, monumented, re-monumented, recovered, found as expressed below:

NOTE: Not more than 4 corners, all in the same town and range, may be recorded on this certificate.



A. Description of original monument and accessories and/or subsequent restoration:

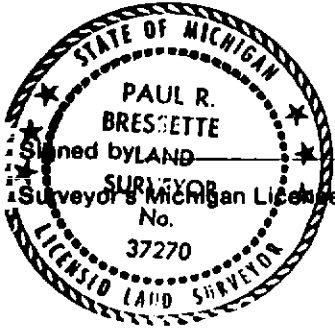
- 10. Quarter Corner common to Sections 27 and 28. 1852: Francis Coleman, D.S. Set wood post witnessed by: Tamarack 6 N45E 14 lks.; Spruce 10 S46W 16 lks.
11. Section Corner common to Sections 27, 28, 33 and 34. 1852: Francis Coleman, D.S. Set wood post witnessed by: Tamarack 12 N25E 43 lks.; Tamarack 10 S35W 29 lks.

B. Description of corner evidence found and/or method applied in restoring or reestablishing corner:

- 10. No evidence of original survey or restoration found. Corner position re-established mid-point and on-line between the Northwest and Southwest corners of Section 27. Corner position lines up with old road heading west.
11. No evidence of original BT's found. Corner position re-established at the intersection of ancient fences east and south. Found two old post points in muck. Distances east to edge of swamp (GLO-3.0 ch.-198', meas.-222'), west to stream (GLO-3.90 ch.-257.4', meas.-255') and north to stream (GLO-27.38 ch.-1807', meas.-1800') fit very well.

C. Description of monument for corner and accessories established to perpetuate locating the position of the corner:

Table with 2 columns: 10. DNR monument and G-11. DNR monument. Rows list monument types and measurements: 9" Tamarack S17E 54.2', 9" Tamarack S06W 16.95', 9" Tamarack S79W 42.2', 6" Tamarack N58W 44.5', 5" Tamarack N58E 28.0', 7" Tamarack S20E 18.6', 6" Tamarack N15W 24.9', Fence post S40E 1.8'



Paul R. Bressette Date 2-13-95

Surveyor's Michigan License No. 37270