

**SURVEY & REMONUMENTATION**

OCT 27 1999

**SECTION**

**LAND CORNER RECORDATION CERTIFICATE** P.A. of 1990 On 11/11 1999  
 Filing Requirement of Act 74, Mich. P.A. 1970

Approved by Menominee County  
 Land Survey Remonumentation  
 Peer Group Under Act 345 Of

For corners in

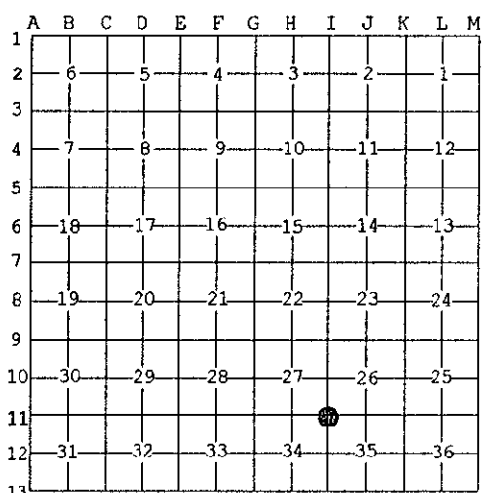
MENOMINEE (County)	Located In:		Corner Code #	
	36N	28W	I-11	
1. Public Land Survey	T	R	_____	
	T	R	_____	
	T	R	_____	
	T	R	_____	
2. Property Controlling in Section	S	T	R	_____
	S	T	R	_____
3. Miscellaneous Property in Sec.	S	T	R	_____
	S	T	R	_____

RECEIVED FOR RECORD  
 09 OCT 15 PM 1:40  
 Chairman  
 BARBARA MORRISON  
 REGISTER OF DEEDS  
 MENOMINEE, MI 49858  
 Register of Deeds Stamp & File Number

4. Lot No. \_\_\_\_\_, Recorded Plat \_\_\_\_\_  
 5. Private Claims \_\_\_\_\_

I, William Lenca, in a field survey on Apr., 1999 do hereby state that under requirements of P.A. 74, Michigan P.A. of 1970, the corner points mentioned in lines 1 and 2 above were in conformance with regulations and rules therefore as required in the current manual of survey instructions of the United States Department of the Interior, Bureau of Land Management or by a decree of a Court of Law and /or that the corner points mentioned in lines 3, 4 and 5 above were in conformance with the rules of the Michigan Board of Land Surveyors or by a Decree of a Court of Law; established, re-established, monumented, recovered, found as expressed below.

NOTE: Not more than 2 corners, all in the same town and range, may be recorded on this certificate.



A. Description of original monument and accessories and/or subsequent restoration:

1852: Original Survey by Francis Coleman - B.T.'s - W. Pine, 16" - N38°W - 29 lks; Fir, 10" - S40°E - 14 lks. No original evidence for this corner was recovered.

B. Description of corner evidence found and/or method applied in restoring or reestablishing corner:

We set this corner at an old fence corner with fences running West and South. This position fits well with a GLO swamp call 274 feet East and with measurements to corners 1 mile East (5304.85 feet), 1/2 mile West (2623.86 feet) and 1 mile South (5308.3 feet), and is accepted as the best available evidence of the position of the original corner.

C. Description of monument for corner and accessories established to perpetuate locating the position of the corner:

Set 2" dia. Aluminum Pipe 30" long/3-1/4" dia. Alum cap stamped for corner location:

8" dia. Maple	N61°E	46.49 feet	Scr. NBT
6" dia. Oak	S50°E	51.57 feet	Scr. NBT
9" dia. Maple	S87°W	18.62 feet	Scr. NBT
10" dia. Maple	N13°W	69.07 feet	Scr. NBT
Metal Survey Sign Post	West	1.3 feet	



NOTE: All bearings are magnetic bearings. All distances are measured with steel tape. Distances to trees are to nail in side of tree.

Signed by William Lenca Date Sep. 15, 1999  
 Surveyor's Michigan License No. 26461