

LAND CORNER RECORDATION CERTIFICATE
 Filing Requirement of Act 74, Mich. P.A. 1970

For corners in
MENOMINEE
 (County)

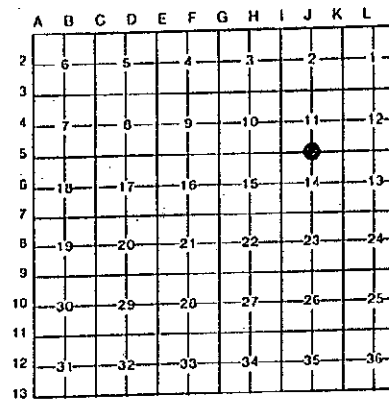
Located In: Corner Code: J-5

		36N	28W	
1. Public Land Survey	T	_____	R	_____
	T	_____	R	_____
	T	_____	R	_____
	T	_____	R	_____
2. Property Controlling in Section	S	_____	T	_____
	S	_____	T	_____
3. Miscellaneous Property in Sec.	S	_____	T	_____
	S	_____	T	_____

4. Lot No. _____, Recorded Plat _____

5. Private Claims _____

95 DEC 27 . PM 3:30
 RECEIVED FOR RECORD
 PAGE # 287 BK 4
 BARBARA JOHNSON
 REGISTER OF DEEDS
 MENOMINEE, MICHIGAN
 Register of Deeds Stamp & File Number



I, William Lenca, in a field survey on Jan 11, 1995, do hereby certify that under requirements of P.A. 74, Michigan P.A. of 1970, the corner points mentioned in lines 1 and 2 above were in conformance with regulations and rules therefore as required in the current manual of survey instructions of the United States Department of the Interior, Bureau of Land Management or by a decree of a Court of Law and/or that the corner points mentioned in lines 3, 4 and 5 above were in conformance with the rules of the Michigan Board of Land Surveyors or by a Decree of a Court of Law; established, re-established, monumented, re-monumented, recovered, found as expressed below:

NOTE: Not more than 4 corners, all in the same town and range, may be recorded on this certificate.

A. Description of original monument and accessories and/or subsequent restoration:
 1852: Original Survey by Francis Colman - B.T.'s - Sugar Maple, 10" - N36°W - 38 lks; Lynn, 10" - S48°E - 22 lks. All original evidence for this corner has been destroyed by county road improvements.

B. Description of corner evidence found and/or method applied in restoring or reestablishing corner:
 This corner location was established in the centerline of an East - West County Road and in line with ancient fence lines running North - South and West from this position. The measurement from this corner East to the SE Corner of Section 11 is 2634.91 feet. The measurement from this corner West to the SW Corner of Section 11 is 2624.19 feet. We accepted the corner position thus established as the best available evidence of the position of the original corner.

C. Description of monument for corner and accessories established to perpetuate locating the position of the corner:
 Sect 5/8" x 24" Iron Rod/3-1/4" dia. Alum. cap stamped for corner location:

12" dia Oak	N63°E	63.67 feet	Scr. NBT
5/8" x 24" Iron Rod/2" Alum. cap marked WITNESS MARKER	S06°E	15.05 feet	
9" dia. Maple	N63°W	85.01 feet	Scr. NBT
10" dia. Maple	N05°W	49.73 feet	Scr. NBT
Survey Sign Post	South	20.0 feet	



NOTE: All bearings are magnetic bearings. All distances are measured with a steel tape. Distances to trees are to nail in side of tree.

Signed by William Lenca Date Oct. 20, 1995
 Surveyor's Michigan License No. 26461