

LAND CORNER RECORDATION CERTIFICATE
 Filing Requirement of Act 74, Mich. P.A. 1970

For corners in
MENOMINEE
 (County)

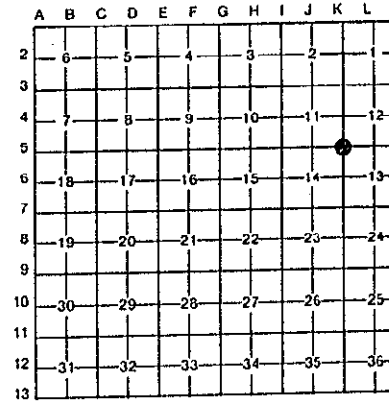
Located In: Corner Code ##

	36N	28W	K-5
1. Public Land Survey	T	R	
	T	R	
	T	R	
	T	R	
2. Property Controlling in Section	S	T	R
	S	T	R
3. Miscellaneous Property in Sec.	S	T	R
	S	T	R

4. Lot No. _____ Recorded Plat _____
 5. Private Claims _____

RECEIVED FOR RECORD
 95 DEC 27 PM 3:30
 PAGE # 290 BK 4
 BARBARA JOHNSON
 REGISTERED LAND SURVEYOR
 MENOMINEE, MICHIGAN
 Register of Deeds Stamp & File Number

I, William Lenca, in a field survey on Jan. 11, 1995
 do hereby certify that under requirements of P.A. 74, Michigan P.A. of 1970, the corner points mentioned in lines 1 and 2 above were in conformance with regulations and rules therefore as required in the current manual of survey instructions of the United States Department of the Interior, Bureau of Land Management or by a decree of a Court of Law and/or that the corner points mentioned in lines 3, 4 and 5 above were in conformance with the rules of the Michigan Board of Land Surveyors or by a Decree of a Court of Law; established, re-established, monumented, re-monumented, recovered, found as expressed below:



NOTE: Not more than 4 corners, all in the same town and range, may be recorded on this certificate.

A. Description of original monument and accessories and/or subsequent restoration:
 1852: Original Survey by Francis Coleman - B.T.'s - Y. Pine, 28" - N44°E - 09 lks; W. Pine, 24" - S15°W - 21 lks. All original evidence for this corner has been destroyed by county road improvements.

B. Description of corner evidence found and/or method applied in restoring or reestablishing corner:
 In a 1995 survey and section subdivision of Section 11, T36N-R28W, we set this corner in line with the centerline of county roads running West and South and in line with an ancient fence line running North from this location. Our measurement to the E1/4 Corner of Section 11 is 2627.12 feet. The distance South to the centerline of an East - West County road along the 1/16 line is 1312.6. The distance South to an ancient fence at the E1/4 Corner of Section 14 is 2626 feet. From these measurements, it appears that this corner position fits very closely with existing lines of occupation, and is accepted as the best available evidence of the position of the original corner.

C. Description of monument for corner and accessories established to perpetuate locating the position of the corner:
 Set 2" dia. Aluminum Pipe/3-1/4" dia. Alum cap stamped for corner location:

5/8" x 24" dia. iron rod/Platic RLS cap	N00°E	33.00 feet	
14" dia. Tamarack	S74°E	56.69 feet	Scr. NBT
18" dia. Cedar	S33°W	68.75 feet	Scr. NBT
5" dia. Spruce	N58°W	56.64 feet	Scr. NBT
Metal Survey Sign Post	N00°E	34.0 feet	

NOTE: All bearings are magnetic bearings. All distances are measured with a steel tape. Distances to trees are to nail in side of tree.

Signed by William Lenca Date Nov. 04, 1995
 Surveyor's Michigan License No. 26461

