

✓  
MICHIGAN  
DEPARTMENT OF CONSERVATION  
FORESTRY DIVISION

# LAND CORNER RECORD

T. 37 N.R. 25W

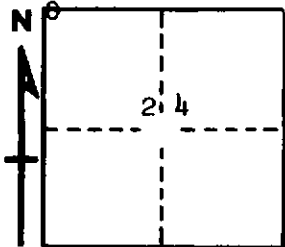
Menominee COUNTY

DESCRIPTION OF CORNER Section corner for sections  $\frac{14}{13}$   $\frac{23}{24}$

CORNER MONUMENT 1" iron pipe with 4" aluminum cap

DATE MONUMENT PLACED AND WITNESSED 7/24/68, F. J. Bray

WITNESSES TO CORNER..... 7" Hemlock (S.14) (NBT) N 31° W, 24 links



8" Cedar (S.24) (NBT) S 42° E, 33½ links

7" Cedar (S.23) (NBT) S 38° W, 20 links

AND

CIRCLE CORNER REGISTERED

**DESCRIPTION IN DETAIL AS TO HOW CORNER WAS LOCATED AND IDENTIFIED OR RESTORED.**

This corner was replaced from three old wood posts and possible B.T., yellow birch with rotted face. No marks visible.

**SURVEYOR'S SEAL**

SIGNED Frank J. Bray DATE 8/16/68  
REGISTERED LAND SURVEYOR  
Frank J. Bray