

MICHIGAN
DEPARTMENT OF CONSERVATION
FORESTRY DIVISION

LAND CORNER RECORD

T. 37 N.R. 25W

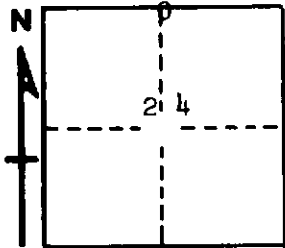
Menominee COUNTY

DESCRIPTION OF CORNER 1/4 corner for sections $\frac{13}{24}$

CORNER MONUMENT 1" iron pipe with 4" aluminum cap

DATE MONUMENT PLACED AND WITNESSED 7/24/68, F.J. Bray

WITNESSES TO CORNER..... 7" Cedar (1/4 S) (NBT) N 69° W, 21 links



9" Cedar (1/4 S) (NBT) N 73° E, 33 links

AND

CIRCLE CORNER REGISTERED

DESCRIPTION IN DETAIL AS TO HOW CORNER WAS LOCATED AND IDENTIFIED OR RESTORED.

This corner was replaced from wood post and points of two older wood posts. Tamarack B.T. in poor condition found notch and portion of scribe marks on lower face. Rotted cedar checks well in bearing and distance.

SURVEYOR'S SEAL

SIGNED Frank J. Bray DATE 8/16/68
REGISTERED LAND SURVEYOR
Frank J. Bray