

Approved by Menominee County
 Land Survey Reamendment
 Peer Group Under Act 345 Of
 P.A. Of 1990 On 12/20, 19995
Mr. Davis RLS
 Chairman

LAND CORNER RECORDATION CERTIFICATE
 Filing Requirement of Act 74, Mich. P.A. 1970

For corners in
MENOMINEE
 (County)

Located In: 37N 26W Corner Code #/ M-4

- | | | | |
|------------------------------------|-------------|-------------|--------------|
| 1. Public Land Survey | T | R | |
| | T <u>37</u> | R <u>25</u> | <u>A-4</u> ✓ |
| | T | R | |
| | T | R | |
| 2. Property Controlling in Section | S | T | R |
| | S | T | R |
| 3. Miscellaneous Property in Sec. | S | T | R |
| | S | T | R |

RECEIVED FOR RECORD
 05 DEC 27 PM 3:32
 BARBARA MORRISON
 REGISTERED CLERK
 MENOMINEE COUNTY
 14800

Register of Deeds Stamp & File Number

4. Lot No. _____ Recorded Plat _____
 5. Private Claims _____
 (SAMES AS A-4 T37N-R25W)

A	B	C	D	E	F	G	H	I	J	K	L	M
2	6	5	4	3	2	1						
3												
4	7	8	9	10	11	12						
5												
6	18	17	16	15	14	13						
7												
8	19	20	21	22	23	24						
9												
10	30	29	28	27	26	25						
11												
12	31	32	33	34	35	36						
13												

I, William Lenca, in a field survey on July 31, 1995, do hereby certify that under requirements of P.A. 74, Michigan P.A. of 1970, the corner points mentioned in lines 1 and 2 above were in conformance with regulations and rules therefore as required in the current manual of survey instructions of the United States Department of the Interior, Bureau of Land Management or by a decree of a Court of Law and/or that the corner points mentioned in lines 3, 4 and 5 above were in conformance with the rules of the Michigan Board of Land Surveyors or by a Decree of a Court of Law; established, re-established, monumented, re-monumented, recovered, found as expressed below:

NOTE: Not more than 4 corners, all in the same town and range, may be recorded on this certificate.

- A. Description of original monument and accessories and/or subsequent restoration:
- 1848: Original Survey by James H. Mullett - B.T.'s - Hemlock, 5" - N30°W - 81 lks; Hemlock, 4" - S38°W - 24 lks. All original evidence has been destroyed by county road improvements.
 - 1899: Survey by Albert Hass, County Surveyor, shows subdivision of Section 7, T37N-R25W. His record states that the original corner was found, bearing trees standing. No new monument or witnesses are described.
 - 1982: Plat of Survey by William Lenca, RLS No. 26461, shows this corner as it relates to other corners in Section 7, T37N-R25W. The corner monument is described as a 3/4" x 18" iron pipe with identification cap.

B. Description of corner evidence found and/or method applied in restoring or reestablishing corner:

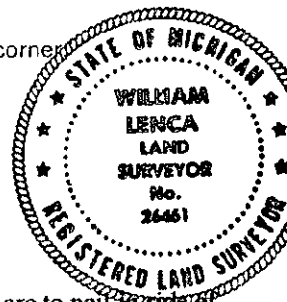
In a 1995 Survey in Section 12, T37N-R26W, we found a 3/4" x 18" iron pipe on line between the NE Corner and the Southeast Corner of said Section 12, and in line with an ancient fence line running West. The corner position falls in the centerline of a county road running North & South. There is a 1/16th fence 1/4 mile south of this location which fits closely with this corner position. This corner has been used by local surveyors for at least 13 years, and is accepted as the best available evidence of the position of the original corner.

C. Description of monument for corner and accessories established to perpetuate locating the position of the corner:
 Set 2" dia. Aluminum Pipe/3-1/4" dia. Alum cap stamped for corner location:

10" dia. Cedar	N44°E	38.55 feet	Scr. NBT
7" dia. Cedar	S38°E	48.06 feet	Scr. NBT
8" dia. Cedar	S54°W	41.43 feet	Scr. NBT
5" dia. Balsam	N37°W	55.45 feet	Scr. NBT

NOTE: All bearings are magnetic bearings. All distances are measured with a steel tape. Distances to trees are to nail in side of tree.

Signed by William Lenca Date Nov. 17, 1995
 Surveyor's Michigan License No. 26461



311