

LAND CORNER RECORDATION CERTIFICATE
Filing Requirement of Act 74, Mich. P.A. 1970

McNeil RLS
Chairman

For corners in

MENOMINEE

(County)

Located In:

Corner Code #

1. Public Land Survey

T37N R 25W

D-9

T R

T R

T R

2. Property Controlling
in Section

S

T R

S

T R

3. Miscellaneous
Property in Sec.

S

T R

S

T R

4. Lot No. _____, Recorded Plat _____

5. Private Claims _____

RECEIVED FOR RECORD
95 DEC 27 PM 3:31
PAGE # 296 BK 9
BARBARA HARRISON
REGISTERED CLERK
REGISTERED DEEDS

Register of Deeds Stamp & File Number

I, William Lenca, in a field survey on Nov. 10, 19 95 do hereby state that under requirements of P.A. 74, Michigan P.A. of 1970, the corner points mentioned in lines 1 and 2 above were in conformance with regulations and rules therefore as required in the current manual of survey instructions of the United States Department of the Interior, Bureau of Land Management or by a decree of a Court of Law and for that the corner points mentioned in lines 3, 4 and 5 above were in conformance with the rules of the Michigan Board of Land Surveyors or by a Decree of a Court of Law; established, re-established, monumented, recovered, found as expressed below:

NOTE: Not more than 2 corners, all in the same town and range, may be recorded on this certificate.

A	B	C	D	E	F	G	H	I	J	K	L
1											
2	6	5	4	3	2						
3											
4	7	8	9	10	11	12					
5											
6	18	17	16	15	14	13					
7											
8	19	20	21	22	23	24					
9											
10	30	29	28	27	26	25					
11											
12	31	32	33	34	35	36					
13											

A. Description of original monument and accessories and/or subsequent restoration:

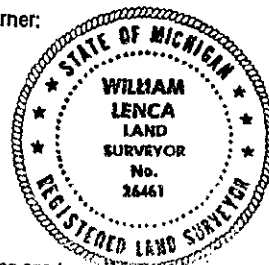
- 1852: Original Survey by George Adair - B.T.'s - Beech, 10" - N33°E - 46 lks; Hemlock, 24" - S35°W - 36 lks. All original evidence has been destroyed by county road improvements.
- 1982: Certified Survey No. 300 by George B. Wilson, RLS No. 17607, shows this corner as it relates to other corners in Section 20, T37N-R25W. The corner is described in the survey legend as a "W-1-B Mon." No ties are given.
- 1982: L.C.R.C. No. 523 by George B. Wilson, RLS No. 17607, states that a Deep Magnet was set in the center of County Roads North, South and East, and in line with a fence line to the West. No ties are given.

B. Description of corner evidence found and/or method applied in restoring or reestablishing corner:

In our 1995 Remonumentation Survey in T37N-R25W, we recovered a 1/2 inch diameter x 12 inch long iron rod in the centerline of county roads running North - South and East, and in line with an old fence line running West. No evidence of a W-1-B monument or Deep Magnet was found. The position of the 1/2 inch iron agrees well with record measurements in Certified Survey No. 300, and is typical of the type of corner monument used by George Wilson. This corner has been used by local surveyors for at least 13 years, and is accepted as the best available evidence of the position of the original corner.

C. Description of monument for corner and accessories established to perpetuate locating the position of the corner:
Set 2" dia. Aluminum Pipe/3-1/4" dia. Alum cap stamped for corner location:

18" dia. Oak	S45°E	100.35 feet	Scr. NBT
8" dia. Maple	S51°W	103.68 feet	Scr. NBT
8" dia. Cedar	N88°W	57.86 feet	Scr. NBT
10" dia. Maple	N26°W	124.30 feet	Scr. NBT
Metal Survey Sign Post	N85°W	28.8 feet	



NOTE: All bearings are magnetic bearings. All distances are measured with steel tape. Distances to trees are to nail in side of tree.

Signed by William Lenca
Surveyor's Michigan License No. 26461

Date Dec. 13, 1995