

LAND CORNER RECORDATION CERTIFICATE
 Filing Requirement of Act 74, Mich. P.A. 1970

For corners in

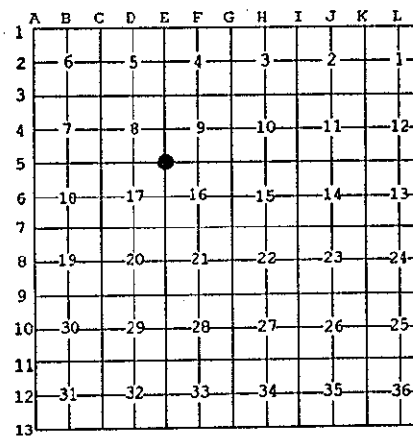
<u>MENOMINEE</u> (County)	Located in:	Corner Code #
1. Public Land Survey	T <u>37N</u> R <u>25W</u>	<u>E-5</u>
	T _____ R _____	_____
	T _____ R _____	_____
2. Property Controlling in Section	S _____ T _____ R _____	_____
	S _____ T _____ R _____	_____
3. Miscellaneous Property in Sec.	S _____ T _____ R _____	_____
	S _____ T _____ R _____	_____

RECEIVED FOR RECORD
 95 DEC 27 PM 3:31
 PAGE # 299 849
 BARBARA JOHNSON
 REGISTER OF DEEDS
 MENOMINEE, MICHIGAN 49858
 Register of Deeds Stamp & File Number

4. Lot No. _____, Recorded Plat _____
 5. Private Claims _____

I, William Lenca, in a field survey on Jan. 24, 1995, do hereby state that under requirements of P.A. 74, Michigan P.A. of 1970, the corner points mentioned in lines 1 and 2 above were in conformance with regulations and rules therefore as required in the current manual of survey instructions of the United States Department of the Interior, Bureau of Land Management or by a decree of a Court of Law and for that the corner points mentioned in lines 3, 4 and 5 above were in conformance with the rules of the Michigan Board of Land Surveyors or by a Decree of a Court of Law; established, re-established, monumented, recovered, found as expressed below:

NOTE: Not more than 2 corners, all in the same town and range, may be recorded on this certificate.



A. Description of original monument and accessories and/or subsequent restoration:

- 1852: Original Survey by George Adair - B.T.'s - Hemlock, 12" - S65°W - 13 lks; Hemlock, 24" - N13°E - 17 lks. All original evidence for this corner has been destroyed by county road improvements.
- 1899: Plat of Survey by Albert Hass, County Surveyor, shows a subdivision of Section 8, T37N-R25W, and states "Set Cedar Post from Gov't B.T.". No new ties are given.

B. Description of corner evidence found and/or method applied in restoring or reestablishing corner:

We set this corner in line with the centerline of a County Road running North from this location and in line with ancient fences running South, East and West. This position agrees reasonably well with Hass' distance West to the NW Corner of Section 17 - measured = 5262.19 feet - Hass record distance = 5273.4 feet. We accepted this location as the best available evidence of the position of the original corner.

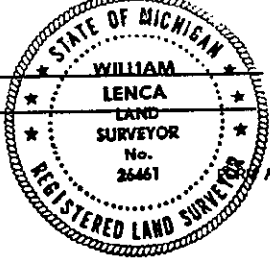
C. Description of monument for corner and accessories established to perpetuate locating the position of the corner:

Set 5/8" x 24" Iron Rod/3-1/4" dia. Alum. cap stamped for corner location:

8" dia. Cedar	N48°E	96.92 feet	Scr. NBT
12" dia. Maple	S41°E	80.54 feet	Scr. NBT
5/8" x 24" Iron Rod/2" dia. Alum. cap marked "WITNESS MARKER"	East	8.51 feet	@ gate post
10" dia. Cedar	N48°W	77.97 feet	Scr. NBT
Metal Survey Sign Post	East	9.0 feet	

NOTE: All bearings are magnetic bearings. All distances are measured with EDM. Distances to trees are to nail in side of tree.

Signed by William Lenca
 Surveyor's Michigan License No. 26461



Date Dec. 13, 1995