

Approved by Menominee County
 Land Survey Remonumentation
 Peer Group Under Act 345 Of
 P.A. Of 1990 On 12/27 1996
McL Davis PLS
 Chairman

LAND CORNER RECORDATION CERTIFICATE
 Filing Requirement of Act 74, Mich. P.A. 1970

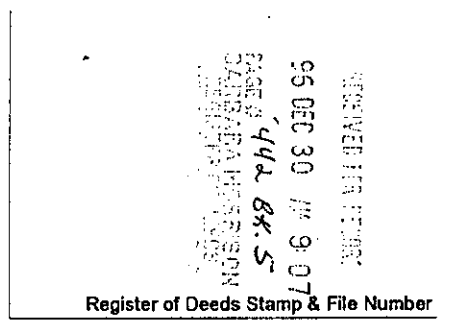
For corners in
MENOMINEE
 (County)

Located In: Corner Code #

1. Public Land Survey T37N R 25W G05
 T R
 T R
 T R

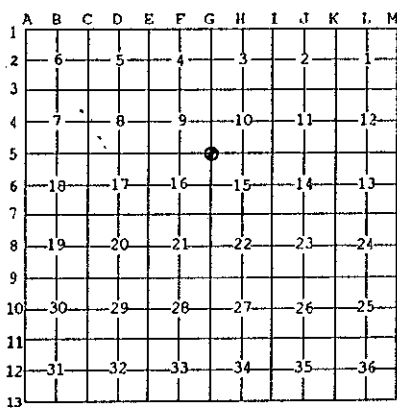
2. Property Controlling S T R
 in Section S T R

3. Miscellaneous S T R
 Property in Sec. S T R



4. Lot No. _____, Recorded Plat _____
 5. Private Claims _____

I, William Lenca, in a field survey on Apr. 22, 1996 do hereby state that under requirements of P.A. 74, Michigan P.A. of 1970, the corner points mentioned in lines 1 and 2 above were in conformance with regulations and rules therefore as required in the current manual of survey instructions of the United States Department of the Interior, Bureau of Land Management or by a decree of a Court of Law and/or that the corner points mentioned in lines 3, 4 and 5 above were in conformance with the rules of the Michigan Board of Land Surveyors or by a Decree of a Court of Law; established, re-established, monumented, recovered, found as expressed below:



NOTE: Not more than 2 corners, all in the same town and range, may be recorded on this certificate.

A. Description of original monument and accessories and/or subsequent restoration:

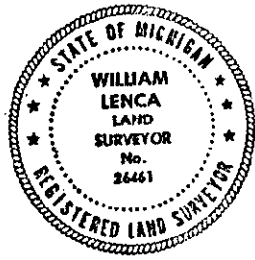
1852: Original Survey by George Adair - B.T.'s - Birch, 10" - N21°W - 31 lks.; Sugar Maple, 12" - S14°E - 31 lks. All original evidence for this corner has been destroyed by farming activities.

B. Description of corner evidence found and/or method applied in restoring or reestablishing corner:

A large corner fence post was found in a location matching with the GLO terrain call to the top of a large ridge (top of 60' ridge is 0.5 chains South of corner). Ancient fences run North and East from this corner. The position of the corner post fits well with distances to corners 1 mile West, 1 mile East, 1/2 mile North and 1/2 mile South, and is accepted as the best available evidence of the position of the original corner.

C. Description of monument for corner and accessories established to perpetuate locating the position of the corner:
 Set 2" dia. Aluminum Pipe/3-1/4" dia. Alum. cap stamped for corner location:

10" dia. Maple	East	55.30 feet	Scr. NET
11" dia. Maple	S18°E	23.92 feet	Scr. NET
9" dia. Maple	S55°W	40.80 feet	Scr. NET
12" dia. Maple	N44°W	13.32 feet	Scr. NET
Metal Survey Sign Post	North	2.00 feet	



NOTE: All bearings are magnetic bearings. All distances are measured with steel tape. Distances to trees are to nail in side of tree.

Signed by William Lenca Date Dec. 26, 1996
 Surveyor's Michigan License No. 26461