

LAND CORNER RECORDATION CERTIFICATE  
 Filing Requirement of Act 74, Mich. P.A. 1970

For corners in  
MENOMINEE  
 (County)

Located In: Corner Code #

1. Public Land Survey T37N R 25W G-11  
 T R  
 T R  
 T R

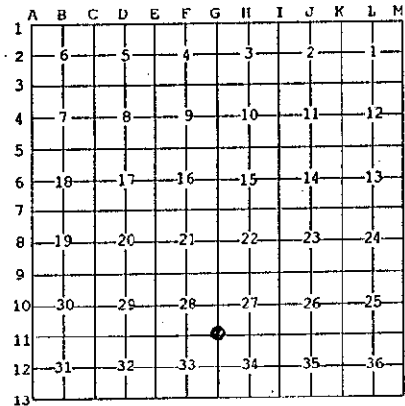
2. Property Controlling S T R  
 in Section S T R

3. Miscellaneous S T R  
 Property in Sec. S T R

97 JUL 23 PM 3:35  
 REGISTERED FOR RECORD  
 PAGE # 499, BK 5  
 BARBARA JORINSON  
 REGISTER OF DEEDS  
 MENOMINEE, MI 49823  
 Register of Deeds Stamp & File Number

4. Lot No. \_\_\_\_\_, Recorded Plat \_\_\_\_\_  
 5. Private Claims \_\_\_\_\_

I, William Lenca, in a field survey on Mar. 17, 19 97 do hereby state that under requirements of P.A. 74, Michigan P.A. of 1970, the corner points mentioned in lines 1 and 2 above were in conformance with regulations and rules therefore as required in the current manual of survey instructions of the United States Department of the Interior, Bureau of Land Management or by a decree of a Court of Law and /or that the corner points mentioned in lines 3, 4 and 5 above were in conformance with the rules of the Michigan Board of Land Surveyors or by a Decree of a Court of Law; established, re-established, monumented, recovered, found as expressed below:



NOTE: Not more than 2 corners, all in the same town and range, may be recorded on this certificate.

A. Description of original monument and accessories and/or subsequent restoration:

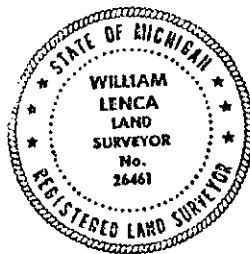
- 1852: Original Survey by George Adair - B.T.'s - Hemlock, 12" - N49°E - 06 lks.; Cedar, 8" - S60°W - 26 lks. All original evidence for this corner has been destroyed by county road improvements.
- 1985: L.C.R.C. 717 recorded by George B. Wilson, RLS No. 17607, states "Sct W-1-B BERNTSEN ALUM. ROAD MON. in line with old wire fence to the East and centerline of gravel road - WITNESSES: Deep-1 Magnet - 11.5 feet NW and 11.15 feet SW.

B. Description of corner evidence found and/or method applied in restoring or reestablishing corner:

We recovered a W-1-B Bertsen Aluminum Road Monument in the centerline of a North - South gravel surface county road and in line with an old fence line running East. We also found both Deep-1 magnets as described in part "A" above. This corner has been accepted and used by local surveyors for several years, and is accepted as the best available evidence of the position of the original corner.

C. Description of monument for corner and accessories established to perpetuate locating the position of the corner:  
 Accepted existing W-1-B Berntsen Aluminum Road Monument/4" Alum. cap:

5" dia. Balsam	N63°E	32.39 feet	Scr. NBT
6" dia. Tamarack	S32°E	58.07 feet	Scr. NBT
9" dia. Tamarack	S49°W	60.93 feet	Scr. NBT
10" dia. Elm	N60°W	50.05 feet	Scr. NBT
Metal Survey Sign Post	West	25.4 feet	



NOTE: All bearings are magnetic bearings. All distances are measured with steel tape. Distances to trees are to nail in side of tree.

Signed by William Lenca Date Mar. 25, 1997  
 Surveyor's Michigan License No. 26461

REMONUM

DEC 2 1997

COMM

499