

MICHIGAN
DEPARTMENT OF CONSERVATION
FORESTRY DIVISION

LAND CORNER RECORD

T. 37 N.R. 27 W

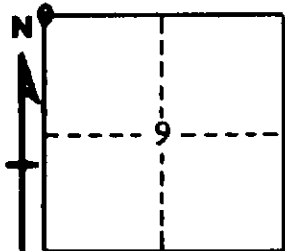
Menominee COUNTY

DESCRIPTION OF CORNER Section Corner common to Secs. 4-5-8-9

CORNER MONUMENT 1" Iron Pipe with 4" Aluminum Cap

DATE MONUMENT PLACED AND WITNESSED 7/10/64 with R. Hinds

WITNESSES TO CORNER..... 6" Cedar (S8 NBT), S 42°W, 20 Lks.



7" Cedar (S9 NBT), S 57°E, 26 Lks.

AND

CIRCLE CORNER REGISTERED

DESCRIPTION IN DETAIL AS TO HOW CORNER WAS LOCATED AND IDENTIFIED OR RESTORED.

This Corner was replaced from Wood Post which checks with two (2) Tamarack stumps for distances and bearings of Original notes. Also a 12" with upper face and scribe marks was found (N 68° W, 10 links), may have been Extra witness tree but was not recorded in Original Notes.

SURVEYOR'S SEAL

SIGNED Frank J. Bray DATE 10/14/1964
REGISTERED LAND SURVEYOR