

LAND CORNER RECORDATION CERTIFICATE  
 Filing Requirement of Act 74, Mich. P.A. 1970

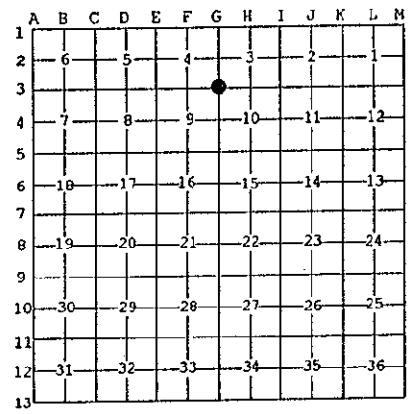
For corners in

MENOMINEE (County)	Located In:	Corner Code #
1. Public Land Survey	T <u>37N</u> R <u>27W</u>	<u>G-3</u>
	T _____ R _____	_____
	T _____ R _____	_____
	T _____ R _____	_____
2. Property Controlling in Section	S _____ T _____ R _____	_____
	S _____ T _____ R _____	_____
3. Miscellaneous Property in Sec.	S _____ T _____ R _____	_____
	S _____ T _____ R _____	_____
4. Lot No. _____, Recorded Plat _____		
5. Private Claims _____		

REGISTERED FOR RECORD  
 97 JUL 23 PM 3:35  
 PAGE # 502 BK#  
 BANSARA TORRISON  
 REGISTER OF DEEDS  
 MENOMINEE, MICHIGAN  
 Register of Deeds Stamp & File Number

I, William Lenca, in a field survey on Feb. 28, 1997 do hereby state that under requirements of P.A. 74, Michigan P.A. of 1970, the corner points mentioned in lines 1 and 2 above were in conformance with regulations and rules therefore as required in the current manual of survey instructions of the United States Department of the Interior, Bureau of Land Management or by a decree of a Court of Law and/or that the corner points mentioned in lines 3, 4 and 5 above were in conformance with the rules of the Michigan Board of Land Surveyors or by a Decree of a Court of Law, established, re-established, monumented, recovered, found as expressed below:

NOTE: Not more than 2 corners, all in the same town and range, may be recorded on this certificate.



A. Description of original monument and accessories and/or subsequent restoration:

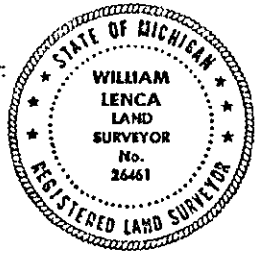
- 1852: Original Survey by Francis Coleman - B.T.'s - W. Birch, 10" - N55°E - 20 lks.; Cedar, 12" - S74°W - 25 lks. All original evidence for this corner has been destroyed by logging activities.
- 1968: L.C.R.C. No. 387 (Volume 2) recorded by Frank Bray, DNR Surveyor, states the corner was re-established from Double Proportional measurement - Wood Post found within a few links distance - set 1" I.P. with 4" Alum. cap - B.T.'s - 5" Ash - N24°E - 39 lks; 8" Ash - S46°W - 29 lks; 6" Ash - N63°W - 49 lks.

B. Description of corner evidence found and/or method applied in restoring or reestablishing corner:

We found a 1inch diameter iron pipe with a standard DNR 4 inch diameter aluminum cap stamped for corner location in position matching well with other corners in the area. We also found the 3 B.T.'s described in L.C.R.C. No. 387. This corner has been accepted and used by land owners and surveyors for 33 years, and is accepted as a careful and faithful reestablishment of the position of the original corner.

C. Description of monument for corner and accessories established to perpetuate locating the position of the corner:  
 Accepted existing 1" dia. Iron Pipe/4" Alum. cap stamped for corner location (DNR Monument):

9" dia. Elm	N35°E	37.07 feet	Scr. NBT
9" dia. Yellow Birch	S25°E	47.25 feet	Scr. NBT
7" dia. Maple	S75°W	14.26 feet	Scr. NBT
8" dia. Maple	N20°W	39.43 feet	Scr. NBT
Metal Survey Sign Post	North	1.9 feet	



NOTE: All bearings are magnetic bearings. All distances are measured with steel tape. Distances to trees are to nail in side of tree.

Signed by William Lenca Date Apr. 01, 1997  
 Surveyor's Michigan License No. 26461

COMMISSION  
 REMONUMENTATION

502  
 DEC 22 1997  
 COMMISSION