

LAND CORNER RECORDATION CERTIFICATE
Filing Requirement of Act 74, Mich. P.A. 1970

Approved by Menominee County
Land Survey Remuneration
Peer Group Under Act 345 Of
P.A. Of 1990 On 12/21 1996
M.P. Davis PLS
Chairman

For corners in

<u>MENOMINEE</u> (County)	Located In:	Corner Code #
1. Public Land Survey	T <u>38N</u> R <u>26W</u>	<u>107</u>
	T _____ R _____	_____
	T _____ R _____	_____
2. Property Controlling in Section	S _____ T _____ R _____	_____
	S _____ T _____ R _____	_____
3. Miscellaneous Property in Sec.	S _____ T _____ R _____	_____
	S _____ T _____ R _____	_____

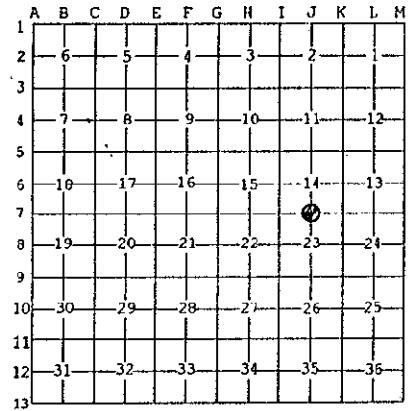
REGISTER OF DEEDS
95 DEC 30 AM 9:08
PAGE 462 BK 5
BARBARA JOHNSON
REGISTERED CLERK
MENOMINEE COUNTY

Register of Deeds Stamp & File Number

4. Lot No. _____, Recorded Plat _____
5. Private Claims _____

I, William Lenca, in a field survey on Nov 27, 19 96 do hereby state that under requirements of P.A. 74, Michigan P.A. of 1970, the corner points mentioned in lines 1 and 2 above were in conformance with regulations and rules therefore as required in the current manual of survey instructions of the United States Department of the Interior, Bureau of Land Management or by a decree of a Court of Law and/or that the corner points mentioned in lines 3, 4 and 5 above were in conformance with the rules of the Michigan Board of Land Surveyors or by a Decree of a Court of Law, established, re-established, monumented, recovered, found as expressed below:

NOTE: Not more than 2 corners, all in the same town and range, may be recorded on this certificate.



A. Description of original monument and accessories and/or subsequent restoration:

1852: Original Survey by George Adair - B.T.'s - Cedar, 14" - N45°W - 33 lks.; Hemlock, 14" - S45°E - 18 lks. All original evidence for this corner has been destroyed by lumbering activities.

B. Description of corner evidence found and/or method applied in restoring or reestablishing corner:

We set this corner at a single proportionate location between the Southeast Corner (I-7) and the Southwest Corner (K-7) of Section 14. There is an existing fence corner 96 feet North of this location, however it falls very near the edge of the swamp. The GLO call indicates that the corner was 1 chain East of the Swamp edge. This fits very closely with the proportional location of the corner, which was accepted as a careful and faithful reestablishment of the position of the original corner.

C. Description of monument for corner and accessories established to perpetuate locating the position of the corner:
Set 2" dia. Aluminum Pipe/3-1/4" dia. Alum cap stamped for corner location:

6" dia. Cedar	N29°E	34.90 feet	Scr. NBT
9" dia. Maple	S72°E	38.27 feet	Scr. NBT
14" dia. Maple	S07°W	36.71 feet	Scr. NBT
10" dia. Maple	N56°W	36.96 feet	Scr. NBT
Metal Survey Sign Post	S58°W	1.2 feet	



NOTE: All bearings are magnetic bearings. All distances are measured with steel tape. Distances to trees are to nail in side of tree.

Signed by William Lenca Date Dec. 19, 1996
Surveyor's Michigan License No. 26461

462