

FEB 11 1998

SECTION

Approved by Menominee County Land Survey Remonumentation Peer Group Under Act 345 Of P.A. Of 1990 On 10/31/1997

LAND CORNER RECORDATION CERTIFICATE Filing Requirement of Act 74, Mich. P.A. 1970

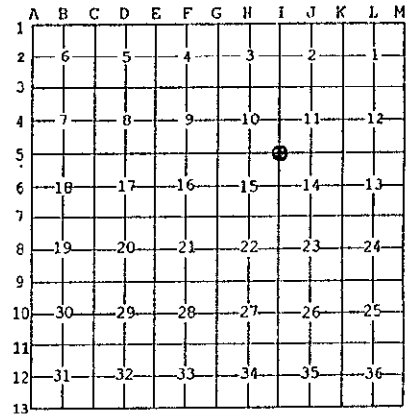
Table with columns: For corners in (MENOMINEE County), Located In: (T38N R 27W), Corner Code # (I-05). Rows include Public Land Survey, Property Controlling in Section, and Miscellaneous Property in Sec.

Register of Deeds Stamp & File Number. Includes date stamp: 97 NOV 21 PM 3:16 and handwritten file number: 525, BKS.

4. Lot No. _____, Recorded Plat _____
5. Private Claims _____

I, William Lenca, in a field survey on Sept 11, 19 97 do hereby state that under requirements of P.A. 74, Michigan P.A. of 1970, the corner points mentioned in lines 1 and 2 above were in conformance with regulations and rules therefore as required in the current manual of survey instructions of the United States Department of the Interior, Bureau of Land Management or by a decree of a Court of Law and for that the corner points mentioned in lines 3, 4 and 5 above were in conformance with the rules of the Michigan Board of Land Surveyors or by a Decree of a Court of Law; established, re-established, monumented, recovered, found as expressed below:

NOTE: Not more than 2 corners, all in the same town and range, may be recorded on this certificate.



A. Description of original monument and accessories and/or subsequent restoration:

- 1852: Original Survey by Harvey Mellon - B.T.'s - Cedar, 10" - N13.5°W - 23 lks.; Cedar, 10" - S23°E - 15 lks. All original evidence for this corner has been destroyed by logging activities.
1978: L.C.R.C. No. 179, recorded by Robert Perkins, states he set a 4" x 4" x 36" concrete monument with a brass cap at point of corner post of ancient fence corner - fences run N - S - E - W. WIT: 6" Tamarack - S06°W - 88.35'; 5" Cedar - S43°E - 118.50'; 6" Dbl. Cedar - S87°W - 234.0'.

B. Description of corner evidence found and/or method applied in restoring or reestablishing corner:

Perkins Corner was destroyed in 1981 by the construction of a Sewage Lagoon. However, prior to the beginning of construction, concrete witness monuments were set by Coleman Engineering at locations 220.42 feet West, 150.00 feet South, 999.95 feet North and 480.10 feet East. The corner re-established from these witness monuments matches with distances to corners shown on the back of L.C.R.C. No. 179. We accepted the position established by Robert Perkins as the best available evidence of the position of the original corner.

C. Description of monument for corner and accessories established to perpetuate locating the position of the corner: Corner falls in sewage lagoon - No monument set at Corner position:

Table with 4 columns: Monument Description, Bearing, Distance, and Notes. Includes entries for 4" dia. Concrete Monument with 5/8" dia. Rod (S89°W, 220.42 feet), 4" dia. Concrete Monument with 5/8" dia. Rod (South, 150.00 feet), 8" dia. Tamarack (S59°W, 234.52 feet, Scr. NBT), and Metal Survey Sign Post (South, 150.8 feet).

NOTE: All bearings are magnetic bearings. All distances are measured with EDM tape. Distances to trees are to nail in side of tree.

Signed by William Lenca, Surveyor's Michigan License No. 26461

Date Sept 25, 1997



525