

LAND CORNER RECORDATION CERTIFICATE
Filing Requirement of Act 74, Mich. P.A. 1970

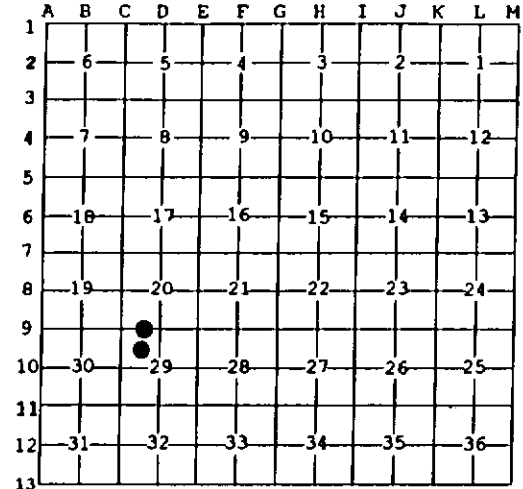
For corners in Menominee (County) Located In: Corner Code #
1. Public Land Survey T R
2. Property Controlling in Section S 29 T 39 R 25W 1
3. Miscellaneous Property in Sec. S T R

Register of Deeds Stamp & File Number

4. Lot No. , Recorded Plat
5. Private Claims
4 Oct 08 1996
1 Oct 07 1996

I, Paul R. Bressette, in a field survey on 19 do hereby state that under requirements of P.A. 74, Michigan P.A. of 1970, the corner points mentioned in lines 1 and 2 above were in conformance with regulations and rules therefore as required in the current manual of survey instructions of the United States Department of the Interior, Bureau of Land Management or by a decree of a Court of Law and/or that the corner points mentioned in lines 3, 4 and 5 above were in conformance with the rules of the Michigan Board of Land Surveyors or by a Decree of a Court of Law; established, re-established, monumented, recovered, found as expressed below.

NOTE: Not more than 2 corners, all in the same town and range, may be recorded on this certificate.



- A. Description of original monument and accessories and/or subsequent restoration:
(1) West One-sixteenth corner common to Sections 20 and 29. Not set in original survey, no evidence of subsequent establishment.
(4) Northwest One-sixteenth corner of Section 29. Not set in original survey, no evidence of subsequent establishment.

- B. Description of corner evidence found and/or method applied in restoring or reestablishing corner:
(1) Corner position established mid-point and on-line between the Northwest and North Quarter corners of Section 29.
(4) Corner position established at the intersection of the North and West one-sixteenth lines of Section 29

- C. Description of monument for corner and accessories established to perpetuate locating the position of the corner:
(1) DNR monument
7" W. Birch N63E 18.2' (1/16S,BT)
7" Spruce S36E 47.3' (1/16S,BT)
5" Cherry S42W 15.8' (1/16S,BT)
8" W. Birch N17W 6.95' (1/16S,BT)
All trees are blazed, scribed and painted. Measurements are made to notch in butt blaze, bearings are magnetic.
(4) DNR monument
08" Cedar N58E 8.0' (1/16S,BT)
06" Cedar S39E 10.7' (1/16S,BT)
07" Cedar S70W 4.1' (1/16S,BT)
10" Cedar N45W 12.75' (1/16S,BT)
All trees are blazed, scribed and painted. Measurements are to notch in butt blaze, bearings are magnetic.



Signed by Paul R. Bressette Date 1-7-97
Surveyor's Michigan License No. 37270

For the Michigan Department of Natural Resources - Forest Management Division