

SURVEY & REMONUMENTATION

JUN 23 1994

COMMISSION

LAND CORNER RECORDATION CERTIFICATE Filing Requirement of Act 74, Mich. P.A. 1970

Approved by Menominee County
Land Survey Remonumentation
Peer Group Under Act 345 Of

P.A. Of 1990 On 5/18 1994

RECEIVED FOR RECORD
94 MAY 20 PM 3:32
PAGE # 76 B.R. 4
BARBARA MORRISON
REGISTER OF DEEDS
MENOMINEE, MI 49859

Register of Deeds Stamp & File Number

For corners in
MENOMINEE

(County)

Located In:

Corner Code #

1. Public Land Survey	T <u>39N</u> R <u>26W</u>			F-11
	T _____ R _____			_____
	T _____ R _____			_____
	T _____ R _____			_____
2. Property Controlling in Section	S _____ T _____ R _____			_____
	S _____ T _____ R _____			_____
3. Miscellaneous Property in Sec.	S _____ T _____ R _____			_____
	S _____ T _____ R _____			_____

4. Lot No. _____, Recorded Plat _____
5. Private Claims _____

I, William Lenca, in a field survey on Apr 19, 1994, do hereby certify that under requirements of P.A. 74, Michigan P.A. of 1970, the corner points mentioned in lines 1 and 2 above were in conformance with regulations and rules therefore as required in the current manual of survey instructions of the United States Department of the Interior, Bureau of Land Management or by a decree of a Court of Law and/or that the corner points mentioned in lines 3, 4 and 5 above were in conformance with the rules of the Michigan Board of Land Surveyors or by a Decree of a Court of Law; established, re-established, monumented, re-monumented, recovered, found as expressed below:

NOTE: Not more than 4 corners, all in the same town and range, may be recorded on this certificate.

	A	B	C	D	E	F	G	H	I	J	K	L	M
2	6	5	4	3	2								
3													
4	7	8	9	10	11	12							
5													
6	13	17	16	15	14	13							
7													
8	19	20	21	22	23	24							
9													
10	30	29	28	27	26	25							
11													
12	31	32	33	34	35	36							
13													

A. Description of original monument and accessories and/or subsequent restoration:

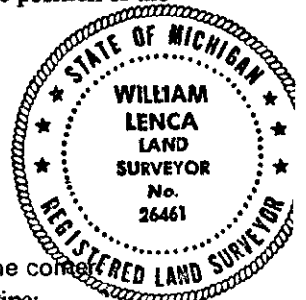
1852 - Original Survey by Harvey Mellen - B.T.'s - Cedar, 12", S04°W, 16 lks ; Cedar, 10", N41°W, 08 lks. Old stump holes were found in position matching Original B.T.'s.

B. Description of corner evidence found and/or method applied in restoring or reestablishing corner:

We found a 2-1/2" diameter Iron Pipe of unknown origin by retracement of the South Line of Section 28, T39N-R26W. We found 2 old stump holes which matched the above GLO B.T.'s. The GLO record distance West to a well defined swamp edge is 582.8 feet. We measured this distance to be 580 feet. The GLO record distances to the SW and SE Corners of Section 28 are 2651.2 feet. We measured these distances to be 2655.2 feet. This corner position falls 10 feet South of a straight line between section corners. Based on the above information, we accepted the position of the iron pipe as a careful and faithful perpetuation of the position of the original corner.

C. Description of monument for corner and accessories established to perpetuate locating the position of the corner:
Set 5/8" Aluminum Rod 3' long/3-1/4" dia. Alum. cap stamped for corner inside of existing 2-1/2" dia. Iron Pipe:

6" dia. Cedar	Scr. NBT	N42°E	12.53 feet
6" dia. Black Spruce	Scr. NBT	S52°E	33.41 feet
10" dia. Black Spruce	Scr. NBT	S36°W	19.18 feet
8" dia. Black Spruce	Scr. NBT	N72°W	17.76 feet
Carsonite Marker		S70°E	2.6 feet



NOTE: All bearings are magnetic bearings. All distances are measured with steel tape. Distances to trees are to nail in side of tree.

Signed by William Lenca Date May 19, 1994

Surveyor's Michigan License No. 26461