

P.A. Of 1990 On 12/20 1995  
Mc April RLS  
Chairman

LAND CORNER RECORDATION CERTIFICATE  
Filing Requirement of Act 74, Mich. P.A. 1970

For corners in	Located in:	Corner Code #
<u>MENOMINEE</u> (County)		
1. Public Land Survey	T <u>39N</u> R <u>27W</u>	<u>I-09</u>
	T ___ R ___	_____
	T ___ R ___	_____
	T ___ R ___	_____
2. Property Controlling in Section	S ___ T ___ R ___	_____
	S ___ T ___ R ___	_____
3. Miscellaneous Property in Sec.	S ___ T ___ R ___	_____
	S ___ T ___ R ___	_____

RECEIVED FOR RECORD  
95 DEC 27 PM 3:32  
PAGE # 315 BK 4  
BARBARA MORRISON  
REGISTER OF DEEDS  
MENOMINEE COUNTY

Register of Deeds Stamp & File Number

4. Lot No. \_\_\_\_\_, Recorded Plat \_\_\_\_\_  
5. Private Claims \_\_\_\_\_

I, William Lenca, in a field survey on AUG 16, 19 95 do hereby state that under requirements of P.A. 74, Michigan P.A. of 1970, the corner points mentioned in lines 1 and 2 above were in conformance with regulations and rules therefore as required in the current manual of survey instructions of the United States Department of the Interior, Bureau of Land Management or by a decree of a Court of Law and/or that the corner points mentioned in lines 3, 4 and 5 above were in conformance with the rules of the Michigan Board of Land Surveyors or by a Decree of a Court of Law; established, re-established, monumented, recovered, found as expressed below:

NOTE: Not more than 2 corners, all in the same town and range, may be recorded on this certificate.

A	B	C	D	E	F	G	H	I	J	K	L
1											
2	6		5		4		3		2		1
3											
4	7		8		9		10		11		12
5											
6	18		17		16		15		14		13
7											
8	19		20		21		22		23		24
9											
10	30		29		28		27		26		25
11											
12	31		32		33		34		35		36
13											

A. Description of original monument and accessories and/or subsequent restoration:

- 1852: Original Survey by Harvey Mellen - B.T.'s: Sugar, 14" - S17°E - 7 lks; Sugar, 12" - N42°W - 27 lks. All original evidence for this corner has been destroyed by county road improvements.
- 1982: L.C.R.C. No. 513 recorded by Neal Spherhake, RLS No. 7876, uses this corner position to determine the location of the N1/4 Corner of Section 27. He describes the location of the corner as being in a 4 way county road junction. No corner monument is described.

B. Description of corner evidence found and/or method applied in restoring or reestablishing corner:

In a 1995 survey of Section 27, T39N-R27W, we recovered the position of the NW Corner and the N1/4 Corner of Section 27. Since the North Quarter Corner had been established equidistant between the Section Corners, we doubled the distance between these corners to establish the East-West position of the corner. We used the centerline of the County Road running West for the North - South position. The corner position then falls in the centerline of County Roads North - South and West and in line with an old lane East. This corner has been used by local surveyors for several years, and is accepted as the best available evidence of the position of the original corner.

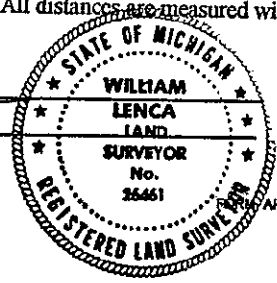
C. Description of monument for corner and accessories established to perpetuate locating the position of the corner:

Set 5/8" x 24" Iron Rod/3-1/4" dia. Alum. cap stamped for corner location in Monument Box:

5/8" x 24" Iron Rod/2" dia. Alum. cap marked "WITNESS MARKER"	N76°E	45.64 feet	0.5' SW of Power Pole
5/8" x 24" Iron Rod/2" dia. Alum. cap marked "WITNESS MARKER"	S33°E	53.73 feet	
5/8" x 24" Iron Rod/2" dia. Alum. cap marked "WITNESS MARKER"	N44°W	37.39 feet	Scr. NBT
5" dia. Tamarack	S46°W	74.67 feet	
Metal Survey Sign Post	N44°W	37.9 feet	

NOTE: All bearings are magnetic bearings. All distances are measured with steel tape. Distances to trees are to nail in side of tree.

Signed by William Lenca  
Surveyor's Michigan License No. 26461



Date Dec. 13, 1995