

LAND CORNER RECORDATION CERTIFICATE
Filing Requirement of Act 74, Mich. P.A. 1970

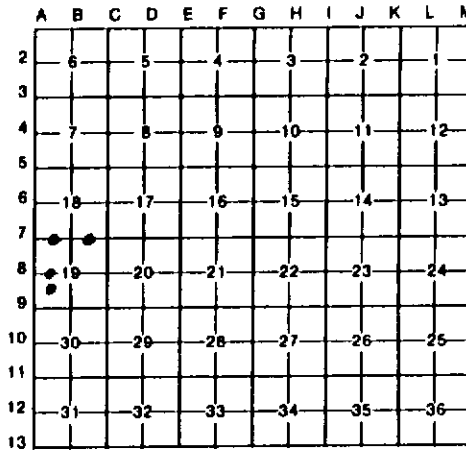
For corners in Menominee (County) Located in: Corner Code //
1. Public Land Survey T R
2. Property Controlling S 19 T 40N R 25W 8,11,2,1
3. Miscellaneous S T R
Property in Sec. S T R

Register of Deeds Stamp & File Number

4. Lot No. Recorded Plat
5. Private Claims

I, Paul Bressette, in a field survey on June 4, August 3, 1992, do hereby certify that under requirements of P.A. 74, Michigan P.A. of 1970, the corner points mentioned in lines 1 and 2 above were in conformance with regulations and rules therefore as required in the current manual of survey instructions of the United States Department of the Interior, Bureau of Land Management or by a decree of a Court of Law and/or that the corner points mentioned in lines 3, 4 and 5 above were in conformance with the rules of the Michigan Board of Land Surveyors or by a Decree of a Court of Law; established, re-established, monumented, re-monumented, recovered, found as expressed below:

NOTE: Not more than 4 corners, all in the same town and range, may be recorded on this certificate.



A. Description of original monument and accessories and/or subsequent restoration:

- 8. West 1/16 corner of Section 19. Not set in original survey. No evidence of subsequent establishment.
11. Southwest 1/16 corner of Section 19. Not set in original survey. No evidence of subsequent establishment.
2. East 1/16 corner common to Sections 18 and 19. Not set in original survey. No evidence of subsequent establishment.
1. West 1/16 corner common to Sections 18 and 19. Not set in original survey. Found wood post +/- 4' NW of monumented position.
B. Description of corner evidence found and/or method applied in restoring or reestablishing corner:
8. Corner established by single proportion between the west and center quarter corners of Section 19.
11. Corner established at the intersection of the south and west 1/16 lines of Section 19.
2. Corner established mid-point and on-line between the northeast and north quarter corners of Section 19.
1. Corner was established by single proportionate measure between the northwest and north quarter corners of Section 19.

C. Description of monument for corner and accessories established to perpetuate localing the position of the corner:

- 8. DNR Monument 11. DNR Monument 2. DNR Monument 1. DNR Monument
7" Cedar, N50E, 20.3' 8" Hemlock, N83E, 8.0' 7" Tamarack, S83E, 45.4' 7" Cedar, N59E, 19.5'
8" Cedar, S03E, 6.05' 6" Hemlock, S22E, 4.9' 12" Cedar, S56E, 55.5' 6" Tamarack, S21E, 5.6'
9" Cedar, S85W, 3.05' 10" Cedar, S75W, 25.0' 6" Apple, S08W, 23.6' 11" Cedar, S52W, 23.2'
7" Hemlock, N11E, 33.3' 7" Hemlock, N57W, 25.7' 4" Cherry, N11W, 30.4' 5" Tamarack, N30W, 16.65'

Signed by Paul R. Bressette
Surveyor's Michigan License No. 37270

Date 8-13-92

