

MICHIGAN
DEPARTMENT OF CONSERVATION
FORESTRY DIVISION

LAND CORNER RECORD

T. 41 N. R. 26 W

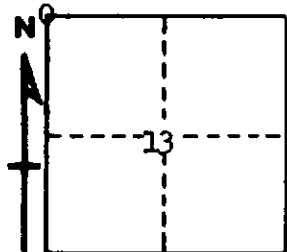
Menominee COUNTY

DESCRIPTION OF CORNER Section Corner common to Sections 11-12-13-14

CORNER MONUMENT Wood Post

DATE MONUMENT PLACED AND WITNESSED 9-28-62

WITNESSES TO CORNER..... NBT's: 7" Cedar (S12 NBT) N 20° E 09 links



7" Cedar (S13 NBT) S 25° E 06 links

AND

CIRCLE CORNER REGISTERED

DESCRIPTION IN DETAIL AS TO HOW CORNER WAS LOCATED AND IDENTIFIED OR RESTORED.

This corner was replaced from two cedar stumps bearing S 45° E 20 links and N 17° W 17 links.

Corner marked by H.S. Smith.

Position checks good with other corners in area.

SURVEYOR'S SEAL

SIGNED Billy D. Buckler DATE 8-22-63
REGISTERED LAND SURVEYOR
Billy D. Buckler