

LAND CORNER RECORDATION CERTIFICATE
Filing Requirement of Act 74, Mich. P.A. 1970

For corners in

Menominee

(County)

Located In:

Corner Code ##

Table with 3 columns: Survey Type, Corner Code, and File Number. Includes rows for Public Land Survey, Property Controlling in Section, and Miscellaneous Property in Sec.

Register of Deeds Stamp & File Number

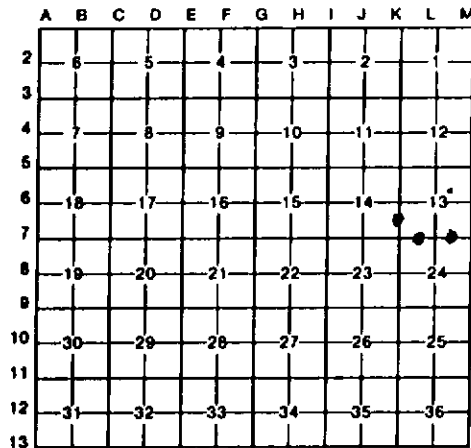
4. Lot No. , Recorded Plat
5. Private Claims

16 May 24, 1995

15 June 07, 1995

I, Paul R. Bressette, in a field survey on 10 February 16, 1995, do hereby certify that under requirements of P.A. 74, Michigan P.A. of 1970, the corner points mentioned in lines 1 and 2 above were in conformance with regulations and rules therefor as required in the current manual of survey instructions of the United States Department of the Interior, Bureau of Land Management or by a decree of a Court of Law and/or that the corner points mentioned in lines 3, 4 and 5 above were in conformance with the rules of the Michigan Board of Land Surveyors or by a Decree of a Court of Law; established, re-established, monumented, re-monumented, recovered, found as expressed below:

NOTE: Not more than 4 corners, all in the same town and range, may be recorded on this certificate.



A. Description of original monument and accessories and/or subsequent restoration:

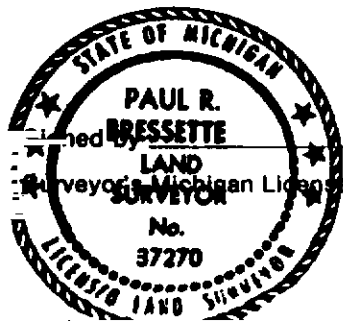
- (10) South One-sixteenth corner common to Sections 12 and 13. Found old wood post SW of monumented position.
(15) West One-sixteenth corner common to Sections 13 and 24. Not set in original survey, no evidence of subsequent establishment.
(16) East One-sixteenth corner common to Sections 13 and 24. Not set in original survey, no evidence of subsequent establishment.

B. Description of corner evidence found and/or method applied in restoring or reestablishing corner:

- (10) Corner position established mid-point and on-line between the Southwest and West Quarter corners of Section 13. Old wood post is S58W 22 feet from monumented position.
(15) Corner position established mid-point and on-line between the Southwest and South Quarter corners of Section 13.
(16) Corner position established mid-point and on-line between the Southeast and South Quarter corners of Section 13.

C. Description of monument for corner and accessories established to perpetuate locating the position of the corner:

- (10) DNR monument: 5" Sugar N48E 32.2', 8" Sugar S48E 40.55', 7" Sugar S40W 36.2', 5" Sugar N16W 3.8'
(15) DNR monument: 09" Cedar N89E 29.2', 11" Cedar S35E 14.2', 12" Cedar S36W 21.75', 06" Maple N62W 15.8'
(16) DNR monument: 7" Y. Birch N32E 9.1', 8" Cedar S41E 36.0', 8" Maple S57W 32.9', 8" Hemlock N19W 14.0'



Paul R. Bressette

Date 11-15-95

37270

For the Michigan Department of Natural Resources - Forest Management Division