

MICHIGAN  
DEPARTMENT OF CONSERVATION  
FORESTRY DIVISION

# LAND CORNER RECORD

T. 21-22N N.R. 5W

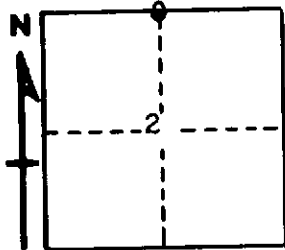
Missaukee COUNTY

DESCRIPTION OF CORNER 1/4 Corner common to Sections 2 and 35.

CORNER MONUMENT 1" Pipe with 4" Brass cap.

DATE MONUMENT PLACED AND WITNESSED January 3, 1962

WITNESSES TO CORNER..... 9" Ash N 19 E 34.4



10" Elm S 89 W 44.9

AND

CIRCLE CORNER REGISTERED

DESCRIPTION IN DETAIL AS TO HOW CORNER WAS LOCATED AND IDENTIFIED OR RESTORED.

This corner was established at midpoint on line between section corners while making a survey in Section 2. Unable to identify U. S. BT's on any NET's of record.

SURVEYOR'S SEAL

SIGNED Keneth J. Ostling DATE March 6, 1962  
REGISTERED LAND SURVEYOR