

MICHIGAN
DEPARTMENT OF CONSERVATION
FORESTRY DIVISION

LAND CORNER RECORD

T. 21 N.R. 5 W

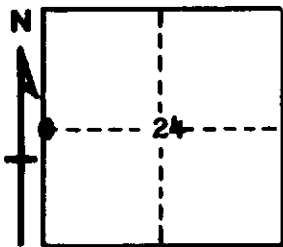
Missaukee COUNTY

DESCRIPTION OF CORNER 1/4 corner common to sections 23-24

CORNER MONUMENT Set Cons. Dept. monument

DATE MONUMENT PLACED AND WITNESSED 8/17/67

WITNESSES TO CORNER.....



CIRCLE CORNER REGISTERED

5" J. Pine N 65 W 23.3'

8" B. Oak S 60 E 40.0'

AND

DESCRIPTION IN DETAIL AS TO HOW CORNER WAS LOCATED AND IDENTIFIED OR RESTORED.

This corner was established by proportionate measurement, midpoint on line, between section corners. No evidence of previous corner or U.S. witnesses.

SURVEYOR'S SEAL

SIGNED Kenneth J. Ostling DATE 8/28/67
REGISTERED LAND SURVEYOR 20068