

MICHIGAN
DEPARTMENT OF CONSERVATION
FORESTRY DIVISION

LAND CORNER RECORD

T. 23 N.R. 5 W

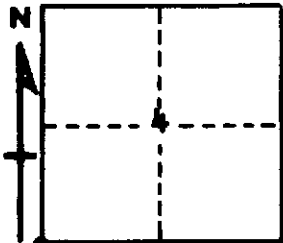
Missaukee COUNTY

DESCRIPTION OF CORNER Section corner common to Sections 4-5-8-9

CORNER MONUMENT Set 1" pipe with 4" aluminum cap

DATE MONUMENT PLACED AND WITNESSED 5-12-67

WITNESSES TO CORNER.....



CIRCLE CORNER REGISTERED

24" Cedar Stp N 87 E 18.2'

10" Aspen S 8 W 22.9'

AND

DESCRIPTION IN DETAIL AS TO HOW CORNER WAS LOCATED AND IDENTIFIED OR RESTORED.

This corner was set while making a retracement survey in this area. Set corner from probable SE USBT stump, a large cedar but no marks. This point faced by another large Cedar stump with NBT face, apparently marked in early survey by County Surveyor.

Could not find old post but was probably destroyed in township road construction. Checks okay for measurement east and north.

SURVEYOR'S SEAL

SIGNED Kenneth Wetberg DATE 5-21-67
REGISTERED LAND SURVEYOR #18068