

MICHIGAN
DEPARTMENT OF CONSERVATION
FORESTRY DIVISION

LAND CORNER RECORD

T. 23 N.R. 5 W

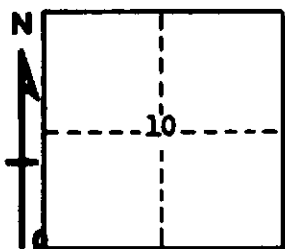
Missaukee COUNTY

DESCRIPTION OF CORNER Sec. Corner common to Sections 9-10-15-16

CORNER MONUMENT Set 1" pipe with 4" aluminum cap

DATE MONUMENT PLACED AND WITNESSED 5-12-67

WITNESSES TO CORNER.....



CIRCLE CORNER REGISTERED

8" Elm N 35 W 18.8'

8" Maple in clump N 68 E 18.7'

AND

DESCRIPTION IN DETAIL AS TO HOW CORNER WAS LOCATED AND IDENTIFIED OR RESTORED.

This corner was found during a survey in this township. Found very old square scribed post at old fence corner, as established in previous survey by unknown surveyor. All U.S. evidence gone, but checks swamp edges and measurements North and East to existing corners.

SURVEYOR'S SEAL

SIGNED _____ DATE 6-7-67
REGISTERED LAND SURVEYOR #10068