

MICHIGAN
DEPARTMENT OF CONSERVATION
FORESTRY DIVISION

LAND CORNER RECORD

T. 23 N.R. 5 W

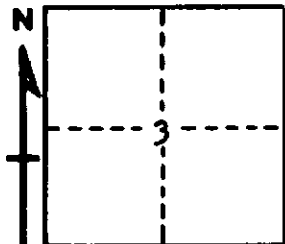
Missaukee COUNTY

DESCRIPTION OF CORNER † corner common to Sections 3-10

CORNER MONUMENT Set 1" pipe with 4" Alum. cap.

DATE MONUMENT PLACED AND WITNESSED 5-12-67

WITNESSES TO CORNER.....



8" R. Oak N 13 E 34.9°

16" R. Pine stub S 2 E 32.4°

AND

CIRCLE CORNER REGISTERED

DESCRIPTION IN DETAIL AS TO HOW CORNER WAS LOCATED AND IDENTIFIED OR RESTORED.

This corner was found during a survey in this township. Found well point at corner as established in previous survey by unknown surveyor, from original SE U.S.B.T. stump, which is in place with plain notch. Very good original corner.

SURVEYOR'S SEAL

SIGNED _____ DATE 6-7-67
REGISTERED LAND SURVEYOR #10068