

LAND CORNER RECORDATION CERTIFICATE
Filing Requirement of Act 74, Mich. P.A. 1970

For corners in

<u>Missaukee</u> <small>(County)</small>	Located In:	Corner Code #
1. Public Land Survey	T <u>23N</u> R <u>5W</u>	<u>M-9</u>
2. Property Controlling in Section	S <u> </u> T <u> </u> R <u> </u>	_____
3. Miscellaneous Property in Sec.	S <u> </u> T <u> </u> R <u> </u>	_____
4. Lot No. _____, Recorded Plat _____	S <u> </u> T <u> </u> R <u> </u>	_____
5. Private Claims _____	S <u> </u> T <u> </u> R <u> </u>	_____

Register of Deeds Stamp & File Num

I, Craig W. McVean, in a field survey on Feb. 19 97 do hereby state that under requirements of P.A. 74, Michigan P.A. of 1970, the corner points mentioned in lines 1 and 2 above were in conformance with regulations and rules therefore as required in the current manual of survey instructions of the United States Department of the Interior, Bureau of Land Management or by a decree of a Court of Law and for that the corner points mentioned in lines 3, 4 and 5 above were in conformance with the rules of the Michigan Board of Land Surveyors or by a Decree of a Court of Law; established, re-established, monumented, recovered, found as expressed below:

NOTE: Not more than 2 corners, all in the same town and range, may be recorded on this certificate.

A. Description of original monument and accessories and/or subsequent restoration:

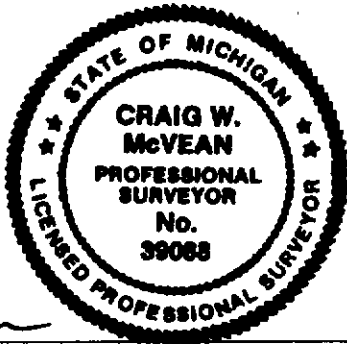
M-9 - GLO - Set Post on Bend River - J. Brink - 1838
 W. Ash 10° S17 1/2° W 40L.
 B. Ash 10° N63° W 28L.
 - GLO - Correct E. from Post - A. Curtis - 1852
 - Robert Ostling - 1954 - Corner Obiterated under water.
 Position Calculated by extending N. Sec. Line from N1/4 Sec. 30 thru FND. W 1/16 Corner intersecting with the CL. of N-S Co. Rd. extended N.'ly. - Subdivision of Sec. 30, T23N, R4W.

B. Description of corner evidence found and/or method applied in restoring or reestablishing corner:

M-9 - Standard Sec. Corner Common Sec. 19 & 30, T23N, R4W & Sec. 24 & 25, T23N, R5W - Corner Position is underwater in Reedsburg Dam Flooding - 10' ± Deep. - Corner Position is calculated by using R. Ostling 1954 Subdivision and monumentation of Sec. 30. See Diagram. Calculated position accepted as the best available evidence of the position of the original corner.

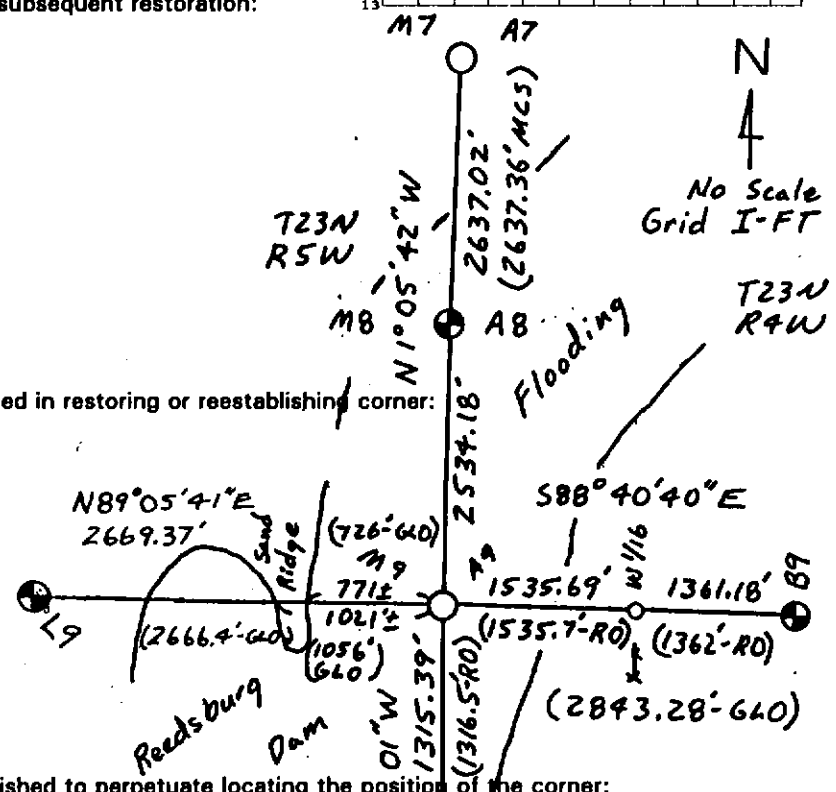
C. Description of monument for corner and accessories established to perpetuate locating the position of the corner:

M-9 - No Monument Set - Falls in Flooding.
 MI State Plane Coordinates - Central Zone
 NAD 83 (1994)
 X = 19557332.95 I-FT
 Y = 382456.90 I-FT
 See Diagram for Wit. Ties.



Signed by Craig W. McVean
 Surveyor's Michigan License No. 39088

A	B	C	D	E	F	G	H	I	J	K	L	M
1												
2	6	5	4	3	2	1						
3												
4	7	8	9	10	11	12						
5												
6	18	17	16	15	14	13						
7												
8	19	20	21	22	23	24						
9												
10	30	29	28	27	26	25						
11												
12	31	32	33	34	35	36						
13												



RO - R. Ostling
 LC - L. Cavanagh
 Miss. Co.
 MCS - Surveys

Date 3/6/1998