

LAND CORNER RECORDATION CERTIFICATE
Filing Requirement of Act 74, Mich. P.A. 1970

For corners in

<u>Missaukee</u> (County)	Located In:	Corner Code #
1. Public Land Survey	T <u>23N</u> R <u>5W</u>	<u>K11</u>
2. Property Controlling in Section	S <u> </u> T <u> </u> R <u> </u>	<u> </u>
3. Miscellaneous Property in Sec.	S <u> </u> T <u> </u> R <u> </u>	<u> </u>

4. Lot No. _____, Recorded Plat _____

5. Private Claims _____



I, Craig W. McVean, in a field survey on February 26 1997 do hereby state that under requirements of P.A. 74, Michigan P.A. of 1970, the corner points mentioned in lines 1 and 2 above were in conformance with regulations and rules therefore as required in the current manual of survey instructions of the United States Department of the Interior, Bureau of Land Management or by a decree of a Court of Law and /or that the corner points mentioned in lines 3, 4 and 5 above were in conformance with the rules of the Michigan Board of Land Surveyors or by a Decree of a Court of Law; established, re-established, monumented, recovered, found as expressed below:

A	B	C	D	E	F	G	H	I	J	K	L	M
1												
2	6	5	4	3	2	1						
3												
4	7	8	9	10	11	12						
5												
6	18	17	16	15	14	13						
7												
8	19	20	21	22	23	24						
9												
10	30	29	28	27	26	25						
11												
12	31	32	33	34	35	36						
13												

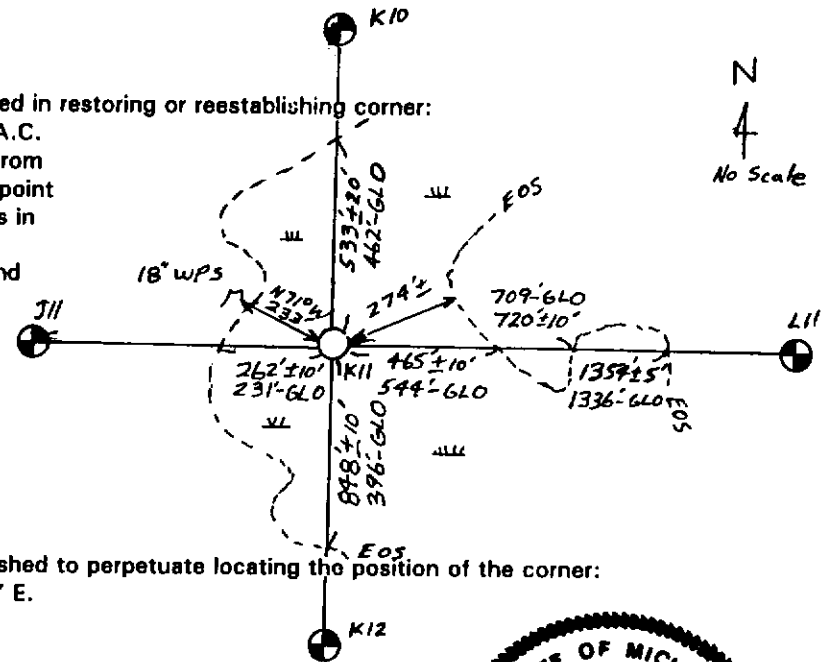
NOTE: Not more than 2 corners, all in the same town and range, may be recorded on this certificate.

A. Description of original monument and accessories and/or subsequent restoration:

K11- GLO- Set Post- A. Curtis- 1852
 Tamarack 10" N73.5°E 414L.
 W. Pine 16" N71°W 352L.

B. Description of corner evidence found and/or method applied in restoring or reestablishing corner:

K11- Sec. Cor. common to Sec. 25,26,35 & 36- Set 4" DNR A.C.
 on 1"X 72" galv. iron pipe in willow and marsh grass swamp from the apparent remains of GLO 18" WPS (base) found at end of point of high ground projecting into swamp. Fits well with topo calls in area except to the south (See Diagram). Fits GLO distances reasonable well N, S & E. Monument accepted as a careful and faithful re-establishment of the position of the original corner.



C. Description of monument for corner and accessories established to perpetuate locating the position of the corner:

K11- 4" A.C. on 1"x72" iron pipe. set carsonite guard post 1' E.
 N71°W 233.06' to set spk. in CL. 18" W. Pine Stp. remains(GLO)
 S82°W 329.45' to N&T in S. side 8" W. Pine scribed 'XBT'
 N82°W 243.65' to N&T in S. side 12" Twin W. Pine scribed 'XBT'
 N70°W 238.49' to N&T in S. side 11" W. Pine scribed 'XBT'
 N78°E 317.20' to N&T in N. side 14" R. Pine scribed 'XBT'



Signed by Craig W. McVean
 Surveyor's Michigan License No. 39088

Date 3/6/1998