

**LAND CORNER RECORDATION CERTIFICATE**  
**Filing Requirement of Act 74, Mich. P.A. 1970**

For corners in  
MISSAUKEE

(County)

Located In:

Corner Code =#

1. Public Land Survey	T <u>23N</u> R <u>6W</u>	<u>H-5, I-4</u>
	T _____ R _____	<u>1-5</u>
	T _____ R _____	_____
	T _____ R _____	_____
2. Property Controlling in Section	S <u>15</u> T _____ R _____	<u>2</u>
	S _____ T _____ R _____	_____
3. Miscellaneous Property in Sec.	S _____ T _____ R _____	_____
	S _____ T _____ R _____	_____

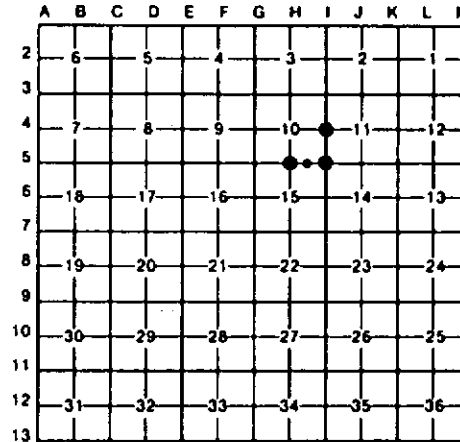
Register of Deeds Stamp & File Number

4. Lot No. \_\_\_\_\_, Recorded Plat \_\_\_\_\_  
 5. Private Claims \_\_\_\_\_

I, CARL F. ROSER, in a field survey on APRIL 19, 19 90, do hereby certify that under requirements of P.A. 74, Michigan P.A. of 1970, the corner points mentioned in lines 1 and 2 above were in conformance with regulations and rules therefore as required in the current manual of survey instructions of the United States Department of the Interior, Bureau of Land Management or by a decree of a Court of Law and/or that the corner points mentioned in lines 3, 4 and 5 above were in conformance with the rules of the Michigan Board of Land Surveyors or by a Decree of a Court of Law; established, re-established, monumented, re-monumented, recovered, found as expressed below:

**NOTE: Not more than 4 corners, all in the same town and range, may be recorded on this certificate.**

A. Description of original monument and accessories and/or subsequent restoration:  
 H-5 I-4 I-5



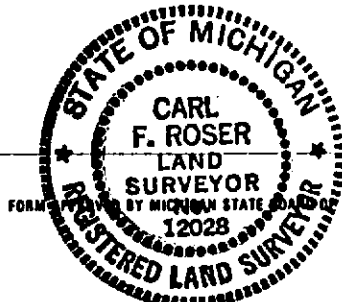
B. Description of corner evidence found and/or method applied in restoring or reestablishing corner:

H-5	I-4	I-5	2
REESTABLISHED 1/4 COR COMMON TO SEC'S 10 & 15, EQUIDISTANT AND ON LINE BETWEEN SEC COR'S 1/2 MILE TO EAST & WEST. OLD FM COR ON BRD, W/FM REMAINS TO N & S 18 837 30' W, 109.7' (FD OLD 1 1/4" X 18" PIPE, LYING ON TOP OF BRD AT FM COR ON 11/10/87). LEWIS KNAPP (79 YRS OLD) HELPED BUILD FM'S IN N 1/2 OF SEC 15 FOR CATTLE ONLY. NOT RESULT OF SURVEY.	REESTABLISHED 1/4 COR COMMON TO SEC'S 10 & 11, EQUIDISTANT AND ON LINE BETWEEN SEC COR'S TO N & S.	REESTABLISHED SE COR OF SEC 10 BY DOUBLE PROPORTIONATE MEASURE TO GLO RESURVEY; 2 MILES NORTH, 1/2 MILE SOUTH, 1 1/2 MILES WEST AND 1 MILE EAST. N-S FENCE REMAINS ARE WEST 25' ±. COR FALLS IN E-W FM REMAINS (ALL DOWN).	ESTABLISHED NE COR OF N 1/2 OF NE 1/4 OF SEC 15 PER STD BLM INSTRUCTIONS. CTR OF M-8 WINDING TRAIL IS 80' WEST.

C. Description of monument for corner and accessories established to perpetuate locating the position of the corner:

H-5	I-4	I-5	2
SET DNR MON & CED POST. 6" W PINE N35°W 14.8' 20" R PINE N20°E 37.8' 4" MAPLE N75°E 37.7' 12" NORWAY PINE STP S60°E 42.2' 6" W PINE S05°W 30.1' IRREG E-W TRAIL RD IS SOUTH 82' ±	DROVE 1" X 5' GALV PIPE W/ALUM DNR CAP; SET CED POST. 13" MAPLE N75°W 70.7' 2" SPRUCE N55°W 25.1' 2" TRPL MAPLE N35°E 9.6' 2" MAPLE (CLP 4) S70°W 12.6' N-S RANDOM TRAVERSE EAST 27.6'	SET DNR MON & CED POST. 9" MAPLE N65°W 7.4' 3" MAPL (CLP 3) N30°E 6.4' 5" MAPLE S85°E 3.0' 9" MAPLE S65°W 28.1'	DROVE 5/8" X 3/4" REROD W/RLS CAP; SET CED POST W/LOC TAG. 10" R PINE NORTH 39.5' 18" NORWAY PINE STP NORTH 15.0' 21" R PINE EAST 23.5' 10" R PINE S15°W 30.6'

Signed by Carl F. Roser Date 8/13/92  
 Surveyor's Michigan License No. 12028



FORM 12028 BY MICHIGAN STATE BOARD OF LAND SURVEYORS, JAN. 28, 1971  
 REVISED MAY 14, 1975  
 REVISED JAN., 1983