

LAND CORNER RECORDATION CERTIFICATE
Filing Requirement of Act 74, Mich. P.A. 1970

For corners in
MISSAUKEE
(County)

Located In: _____ Corner Code ##

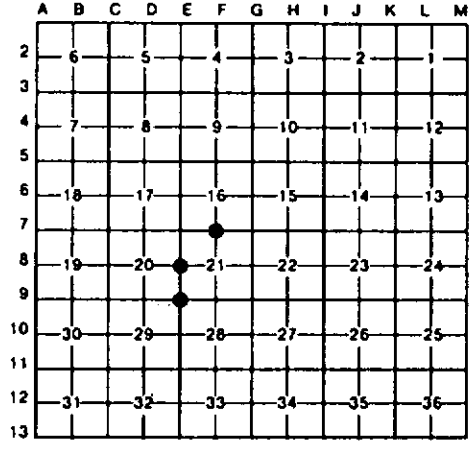
1. Public Land Survey	T <u>23N</u> R <u>6W</u>	<u>E-8, E-9</u>
	T _____ R _____	<u>F-7</u>
	T _____ R _____	_____
	T _____ R _____	_____
2. Property Controlling in Section	S _____ T _____ R _____	_____
	S _____ T _____ R _____	_____
3. Miscellaneous Property in Sec.	S _____ T _____ R _____	_____
	S _____ T _____ R _____	_____

Register of Deeds Stamp & File Number

4. Lot No. _____, Recorded Plat _____
 5. Private Claims _____

I, CARL F. ROSER, in a field survey on AUGUST 23, 19 90, do hereby certify that under requirements of P.A. 74, Michigan P.A. of 1970, the corner points mentioned in lines 1 and 2 above were in conformance with regulations and rules therefore as required in the current manual of survey instructions of the United States Department of the Interior, Bureau of Land Management or by a decree of a Court of Law and/or that the corner points mentioned in lines 3, 4 and 5 above were in conformance with the rules of the Michigan Board of Land Surveyors or by a Decree of a Court of Law; established, re-established, monumented, re-monumented, recovered, found as expressed below:

NOTE: Not more than 4 corners, all in the same town and range, may be recorded on this certificate.

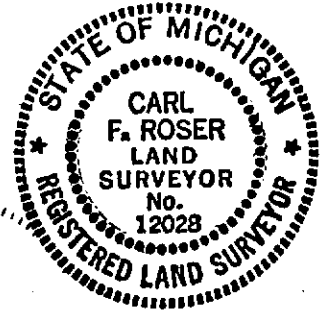


A. Description of original monument and accessories and/or subsequent restoration:

E-8	E-9	F-7
REESTABLISHED 1/4 COR CORN TO SEC'S 20 & 21, EQUIDISTANT & ON LINE BETW SEC COR'S TO N AND S (S.P. TO SLO). OLD N-S BARBED WIRE, ON GROUND, IS 200'± NORTH OF 1/4 COR & 27'± WEST OF SEC LINE. N-S RAND TRAVERSE LINE IS WEST, 29.8'. CENTER OF SMALL N-S OPENING IN WOODS W/PATH IS 30'± WEST.	RESTORED SEC COR PER SLO STREAM TIES TO WEST & SOUTH. SLO TO WEST WAS 3.20 CHAINS (211' TO NEAREST 10 LINKS, 6.6'), WE MEA. 210'± 5'. SLO TO SOUTH WAS 3.0 CHAINS (198' TO NEAREST 1/2 CHAIN), WE MEA. 185'± 10'. OLD N-S FN REMAINS (ON GROUND) AT EAST EDGE OF SMALL CLEARING IN STREAM FLATS, ARE 54'± 5' WEST.	FD & ACCEPTED OLD 1" ± SQ BATTERED-OVER IRON, FOR S 1/4 COR SEC 16. COR FITS DESCRIPTION, STONE AND WITS FROM OLD SMALL, BLACK BOOK, M-8, NO DATE, NO PG NUMBER; S-16, T23N-R6W, (H) S 1/4 S-16; LOOKS LIKE MCBAIN WRITING & BOOK. COR FALLS IN OLD E-W FN REMAINS.

C. Description of monument for corner and accessories established to perpetuate locating the position of the corner:

E-8	E-9	F-7
DROVE 1" X 5' GALV PIPE W/ALUM DNR CAP; SET ROUND 4" X 7' LONG MOLMANIZED POST.	DROVE 1" X 48" GALV PIPE W/ ALUM DNR CAP; SET CED POST.	FD 7/8" X 7/8" X 24" IRON; ADDED DNR MON & CED POST.
8" MAPLE N65°W 16.9'	10" CEDAR NORTH 38.4'	12" W PINE N10°W 60.3'
5" MAPLE N30°E 7.8'	13" CEDAR N35°E 46.9'	3" W PINE N80°E 42.2'
7" MAPLE S55°W 29.3'	17" MAPLE N85°E 38.5'	2" R PINE S40°E 23.2'
9" MAPLE S75°W 19.8'	11" MAPLE S80°W 38.9'	FD OLD 24" W PINE STP W/NOTCH S80°W 56.0'
		HIGH POINT ON 1 1/2' X 2' STONE S80°W 12.7'



Signed by Carl F. Roser Date 8/13/92
 Surveyor's Michigan License No. 12028