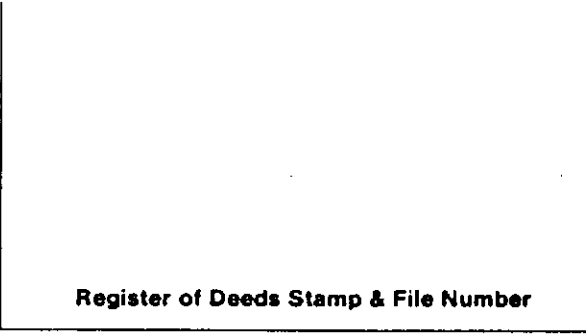


LAND CORNER RECORDATION CERTIFICATE
Filing Requirement of Act 74, Mich. P.A. 1970

For corners in
MISSAUKEE
(County)

Located In: _____ Corner Code **#**

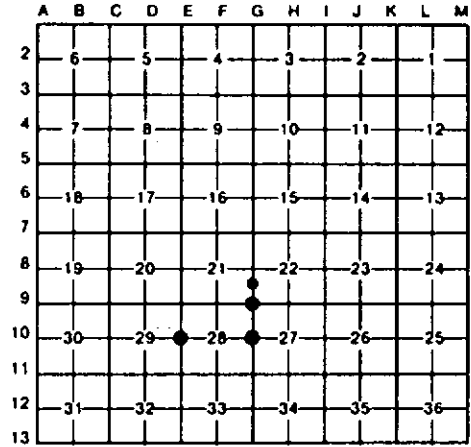
| | | |
|------------------------------------|-----------------------------|------------------|
| 1. Public Land Survey | T <u>23N</u> R <u>6W</u> | <u>E-10, 6-9</u> |
| | T _____ R _____ | <u>6-10</u> |
| | T _____ R _____ | _____ |
| | T _____ R _____ | _____ |
| 2. Property Controlling in Section | S <u>21</u> T _____ R _____ | <u>14</u> |
| | S _____ T _____ R _____ | _____ |
| 3. Miscellaneous Property in Sec. | S _____ T _____ R _____ | _____ |
| | S _____ T _____ R _____ | _____ |



4. Lot No. _____, Recorded Plat _____
 5. Private Claims _____

I, CARL F. ROBER, in a field survey on AUGUST 27, 19 90, do hereby certify that under requirements of P.A. 74, Michigan P.A. of 1970, the corner points mentioned in lines 1 and 2 above were in conformance with regulations and rules therefore as required in the current manual of survey instructions of the United States Department of the Interior, Bureau of Land Management or by a decree of a Court of Law and/or that the corner points mentioned in lines 3, 4 and 5 above were in conformance with the rules of the Michigan Board of Land Surveyors or by a Decree of a Court of Law; established, re-established, monumented, re-monumented, recovered, found as expressed below:

NOTE: Not more than 4 corners, all in the same town and range, may be recorded on this certificate.



A. Description of original monument and accessories and/or subsequent restoration:

E-10 6-9 6-10 14

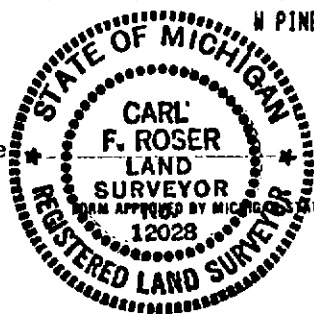
B. Description of corner evidence found and/or method applied in restoring or reestablishing corner:

| | | | |
|---|--|--|---|
| E-10 FD 1/2" X 18" PIPE; FOR 1/4 COR COMMON TO SEC'S 28 & 29. COR FALLS AT EAST END OF E-W FENCE FROM WEST (ON EAST EDGE OF OLD END POST BOTTOM). FOUND 3-STRANDS BARBED WIRE FENCE REMAINS TO NORTH, ON GROUND & IN TREES. CORNER FITS FOUR NITS BY RLS. J. WILCOX. | 6-9 REESTABLISHED SE COR OF SEC 21; DOUBLE PROPORTION TO US, 1 MILE N-S-E-W. OLD FENCE CORNER, FN N-S-E IS S66°E, 40'. S'LY EDGE MUSKOGON RIVER IS NORTH 706' ± 3'. | 6-10 REESTABLISHED ONE-QUARTER CORNER COMMON TO SEC'S 27 & 28, EQUIDISTANT & ON LINE TO SEC COR'S TO N & S; PROPORTIONATE MEASURE TO U.S. | 14 ESTABLISHED SE COR OF NE 1/4-SE 1/4 OF SEC 21 PER STANDARD BLM INSTRUCTIONS. COR FALLS ON W'LY EDGE OF SMALL ISLAND OF HIGH GROUND. S'LY EDGE OF CREEK IS 690' ± 5' NORTH. N'LY EDGE OF M.B. MUSKOGON RIVER IS SOUTH 381' ± 4'. |
|---|--|--|---|

C. Description of monument for corner and accessories established to perpetuate locating the position of the corner:

| | | | |
|---|--|--|--|
| E-10 FD 1/2" X 18" PIPE; ADDED DNR MON & SET CED POST. 22" R PINE N45°W 36.1' 10" R PINE N05°W 39.1' 8" TW MAPLE N20°E 20.8' POWER POLE EAST 52.28' STOCKTON GATE ACROSS N-S 2-TRACK. N87°47'W 320.0' | 6-9 DROVE 1" X 96" GALV PIPE W/ALUM DNR CAP; SET MOLMANIZED POST. 4" TAMARACK N30°W 23.7' 4" TAMARACK N50°E 27.2' 9" TAMARACK S70°E 36.6' 7" TAMARACK S70°W 35.1' | 6-10 SET DNR MON & CED POST. 8" MAPLE N55°W 18.0' 8" CEDAR N35°E 86.9' 4" MAPLE S20°E 34.4' 10" TW MAPLE S80°W 15.7' N-S RANDOM TRAVERSE LINE EAST 43.0' | 14 DROVE 3/8" X 61" GALV PIPE W/RLS CAP; SET MOLMANIZED POST W/LOC TAG. 10" R PINE N40°E 79.9' 10" R PINE N50°E 51.6' 6" BALSAM S45°E 6.6' 6" BALSAM IN OLD 20" W PINE STP. S35°W 10.5' |
|---|--|--|--|

Signed by Carl F. Rober 8/13/92 Date _____
 Surveyor's Michigan License No. 12028



MICHIGAN STATE BOARD OF LAND SURVEYORS, JAN. 26, 1971
 REVISED MAY 14, 1975
 REVISED JAN., 1983