

LAND CORNER RECORDATION CERTIFICATE

Filing Requirement of Act 74, Mich. PA 1970

For Corners In:
Missaukee
 (County)

		Located In		Corner Code #
1. Public Land Survey	T	<u>23N</u>	R <u>7W</u>	<u>F2</u>
	T	_____	R _____	_____
2. Property Controlling in Section	S <u>4</u>	T <u>23N</u>	R <u>7W</u>	<u>10</u>
	S _____	T _____	R _____	_____
3. Miscellaneous Property in Section	S _____	T _____	R _____	_____
	S _____	T _____	R _____	_____

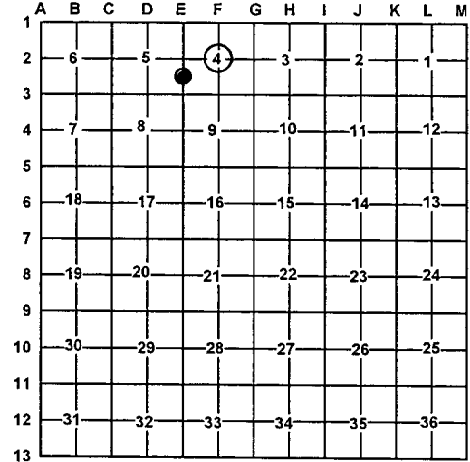
4. Lot No: _____ Recorded Plat: _____

5. Private Claims: _____

I, Craig W. McVean, in a field survey on Aug. 8, 2008 do hereby state that under requirements of PA 74, Michigan PA of 1970, the corner points mentioned in lines 1 and 2 above were in conformance with regulations and rules therefore as required in the current manual of survey instructions of the United States Department of the Interior, Bureau of Land Management or by a decree of a Court of Law and/or that the corner points mentioned in lines 3, 4 and 5 above were in conformance with the rules of the Michigan Board of Land Surveyors or by a Decree of a Court of Law; established, re-established, monumented, recovered, found as expressed below:

NOTE: Not more than 2 corners, all in the same town and range, may be recorded on this certificate.

Register of Deeds Stamp & File Number



A. Description of original monument and accessories and/or subsequent restoration:

F2 - None 10 - None



B. Description of corner evidence found and/or method applied in restoring or re-establishing corner:

F2 - C 1/4 Corner of Section 4 - Set 2" stamped Aluminum cap on 5/8" x 34" rebar per standard BLM procedure at intersection of 1/4 lines. S65°21'29"E 37.39' to set 1/2" rebar for PI of Road S & E. 10 - S 1/16 corner common to Sections 4 & 5 - Set 2" stamped Aluminum cap on 5/8" x 34" rebar per standard BLM procedure. Fence corner remains E & S is 16.5' SSE

C. Description of monument for corner and accessories established to perpetuate locating the position of the corner:

F2 - Stamped 2" Aluminum cap on 5/8" x 34" rebar
 N63°E 6.62' to set nail & tag in NW side 18" Beech
 S23°E 33.86' to set nail & tag in W. side 22" Sugar Maple
 S24°W 10.70' to set nail & tag in SE side 11" Sugar Maple
 N81°W 41.13' to set nail & tag in N. side 13" Sugar Maple
 Set Blue Carsonite Post with location tag 1' North
 S65°21'29"E 37.39' to set 1/2" rebar at PI of Bit. Rd. S & E.

10 - Stamped 2" Aluminum cap on 5/8" x 34" rebar
 S15°W 36.81' to set nail & tag in W. side 13" Red Oak
 N80°W 18.74' to set nail & tag in N. side 7" White Pine
 N14°E 45.95' to set nail & tag in SE side 12" White Pine
 N77°E 16.61' to set nail & tag in SE side 10" White Pine
 Set Blue Carsonite Post with location tag 1' NW

Signed by: Craig W. McVean
 Surveyor's Michigan License No.: 39088

Date: 6/1/2010