

# LAND CORNER RECORDATION CERTIFICATE

Filing Requirement of Act 74, Mich. PA 1970

For Corners In:  
Missaukee Located In \_\_\_\_\_ Corner Code # \_\_\_\_\_  
 (County)

1. Public Land Survey		T _____		R _____					
		T _____		R _____					
2. Property Controlling in Section	S <u>4</u>	T <u>23N</u>	R <u>7W</u>						<u>9</u>
	S <u>4</u>	T <u>23N</u>	R <u>7W</u>						<u>12</u>
3. Miscellaneous Property in Section	S _____	T _____	R _____						
	S _____	T _____	R _____						

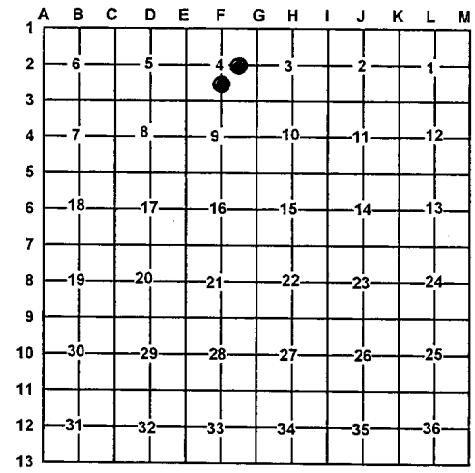
4. Lot No: \_\_\_\_\_ Recorded Plat: \_\_\_\_\_

5. Private Claims: \_\_\_\_\_

I, Craig W. McVean, in a field survey on Aug. 14, 2008 do hereby state that under requirements of PA 74, Michigan PA of 1970, the corner points mentioned in lines 1 and 2 above were in conformance with regulations and rules therefore as required in the current manual of survey instructions of the United States Department of the Interior, Bureau of Land Management or by a decree of a Court of Law and/or that the corner points mentioned in lines 3, 4 and 5 above were in conformance with the rules of the Michigan Board of Land Surveyors or by a Decree of a Court of Law; established, re-established, monumented, recovered, found as expressed below:

**NOTE: Not more than 2 corners, all in the same town and range, may be recorded on this certificate.**

Register of Deeds Stamp & File Number



A. Description of original monument and accessories and/or subsequent restoration:

9 - None 12 - None



B. Description of corner evidence found and/or method applied in restoring or re-establishing corner:

9 - CE 1/16 Corner Section 4 - Set stamped 2" Aluminum Cap on 5/8" x 34" rebar per standard BLM procedure. South 8'± to phy. centerline of E-W Bit. Rd. 12 - CS 1/16 Corner Section 4 - Set stamped 2" Aluminum Cap on 5/8" x 34" rebar per standard BLM procedure. East 19'± to phy. centerline N-S Bit. Rd.

C. Description of monument for corner and accessories established to perpetuate locating the position of the corner:

9 - Stamped 2" Aluminum cap on a 5/8" x 34" rebar  
 N70°W 74.59' to set nail & tag in S. side 12" twin Ironwood  
 S19°W 53.05' to set nail & tag in W. side 6" & 10" twin Sugar Maple  
 S32°E 63.58' to set nail & tag in SW side 6" Sugar Maple  
 North 25.79' to set 2" Aluminum cap on 5/8" x 34" rebar on-line at ROW line with Blue Carsonite Post and location tag

12 - Stamped <sup>2"</sup> Aluminum cap on a 5/8" x 34" rebar.  
 N37°W 53.46' to set nail & tag in SW side 7" Sugar Maple  
 N50°E 78.64' to set nail & tag in SE side 11" Red Oak  
 S34°E 109.57' to set nail & tag in NE side 10" Red Oak  
 West 15.70' to set 2" Aluminum cap on 5/8" x 34" rebar on line at ROW line and a Blue Carsonite Post with location tag

Signed by: Craig W. McVean  
 Surveyor's Michigan License No.: 39088

Date: 6/1/2010