

# LAND CORNER RECORDATION CERTIFICATE

Filing Requirement of Act 74, Mich. PA 1970

For Corners In: Missaukee Located In \_\_\_\_\_ Corner Code # \_\_\_\_\_  
 (County)

1. Public Land Survey	T	_____	R	_____	_____
	T	_____	R	_____	_____
2. Property Controlling in Section	S	7	T	23N	R 7W 12
	S	7	T	23N	R 7W 16
3. Miscellaneous Property in Section	S	_____	T	_____	R _____
	S	_____	T	_____	R _____

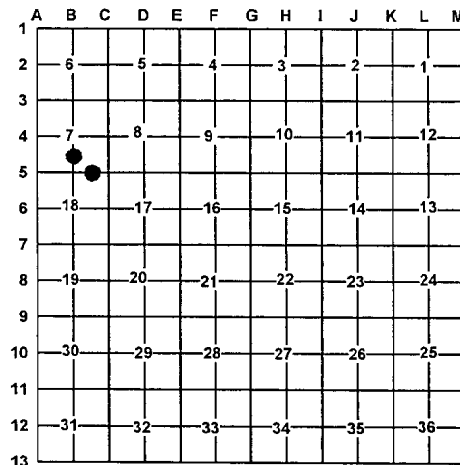
4. Lot No: \_\_\_\_\_ Recorded Plat: \_\_\_\_\_

5. Private Claims: \_\_\_\_\_

I, Craig W. McVean, in a field survey on Dec. 8, 2009 do hereby state that under requirements of PA 74, Michigan PA of 1970, the corner points mentioned in lines 1 and 2 above were in conformance with regulations and rules therefore as required in the current manual of survey instructions of the United States Department of the Interior, Bureau of Land Management or by a decree of a Court of Law and/or that the corner points mentioned in lines 3, 4 and 5 above were in conformance with the rules of the Michigan Board of Land Surveyors or by a Decree of a Court of Law; established, re-established, monumented, recovered, found as expressed below:

**NOTE: Not more than 2 corners, all in the same town and range, may be recorded on this certificate.**

Register of Deeds Stamp & File Number



**A. Description of original monument and accessories and/or subsequent restoration:**

12 – 1895 – County Surveyor Records – M. D. Richardson – FB# 14, p. 64. & FB# 35, p. 49  
 1) WPS 30" N67°W 31; 2) WPS 28" N56°E 53  
 - 1911 – CSR – FB #14, p. 76 - Cedar stake and stone  
 - 1975 – Plat of "Missaukee Industrial Park No. 1" – J. L. Wilcox, L. 2 of plats, pgs. 163-166. Concrete Mon. placed.

16 – 1895 – County Surveyor records – F. W. Hastings – FB# 35 p. 49  
 1) WPS 26" N48°E 24; 2) Hem. 25" S08°W 22  
 - 1975 – Plat of "Missaukee Industrial Park No. 1", J. L. Wilcox, L. 2 of plats pgs. 163-166 – Concrete Monument Placed  
 - 1981 – Rec. Sur. – L. S-2, p. 20 – J. A. Milletics – Fd. Concrete Mon.  
 - 2001 – Rec. Sur. L. S-4, p. 150 – W. E. Sikkema – Conc. Mon.

**B. Description of corner evidence found and/or method applied in restoring or re-establishing corner:**

12 – CS 1/16 Corner Section 7 – Found 4" diameter concrete monument with 1/2" iron per plat. No conclusive evidence of county surveyor BTs, Cedar stake, or stone. 4" round concrete monument with 1/2" rebar is accepted as best available evidence of the position of the corner.

16 – E 1/16 corner common to Sections 7 & 18 - Fd. 1/2" CIR #24617. Found no evidence of county surveyor BTs. Believe Co. notes may be different township. Concrete monument from plat is gone. Found and accepted a 1/2" x 18" capped iron rod #24617 as best available evidence of the position of the corner. Fits plat of record. Centerline E – W 2-track is 6' S.

**C. Description of monument for corner and accessories established to perpetuate locating the position of the corner:**

12 – 4" round concrete monument with a 1/2" rebar  
 N70°E 52.13' to set nail & tag in N. side 3" White Pine  
 S20°E 6.80' to set nail & tag in W. side 17" White Pine  
 West 39.21' to set nail & tag in N. side 5" Cherry  
 N16°W 48.04' to set nail & tag in E. side 12" Red Pine  
 Set Blue Carsonite Post with location tag 1' North

16 – Replaced found 1/2" x 18" capped iron rod with a 4" round x 3' long concrete cylinder with a 1/2" rebar in center.  
 N76°E 55.60' to set nail & tag in S. side 6" Oak  
 N35°E 40.38' to set nail & tag in SE side twin 14" Oak  
 N69°W 28.12' to set nail & tag in S. side twin 5" Oak  
 S34°W 24.59' to set nail & tag in NW side 8" Scotch Pine  
 Set Blue Carsonite Post with location tag 1' Northeast  
 Steel fence post on East side monument.

Signed by: Craig W. McVean  
 Surveyor's Michigan License No.: 39088

Date: 6/1/2010

