

SURVEY &
REMONUMENTATION

LIBER 324 PAGE 1293

JAN 27 1999

LAND CORNER RECORDATION CERTIFICATE
Filing Requirement of Act 74, Mich. P.A. 1970

For corners in SECTION

Missaukee

(County)

Located In:

Corner Code #

1. Public Land Survey	T <u>23</u> N R <u>8</u> W	L-13
	T ___ R ___	_____
	T ___ R ___	_____
	T ___ R ___	_____
2. Property Controlling in Section	S ___ T ___ R ___	_____
	S ___ T ___ R ___	_____
3. Miscellaneous Property in Sec.	S ___ T ___ R ___	_____
	S ___ T ___ R ___	_____

#1313

MISSAUKEE COUNTY MICHIGAN

RECORDED DEC 28 1998 4:00 PM

Paulyn Flare
REGISTER

Register of Deeds Stamp & File Number

4. Lot No. _____, Recorded Plat _____
5. Private Claims _____

I, Phillip D. Case, in a field survey on May 6, 19 98 do hereby state that under requirements of P.A. 74, Michigan P.A. of 1970, the corner points mentioned in lines 1 and 2 above were in conformance with regulations and rules therefore as required in the current manual of survey instructions of the United States Department of the Interior, Bureau of Land Management or by a decree of a Court of Law and /or that the corner points mentioned in lines 3, 4 and 5 above were in conformance with the rules of the Michigan Board of Land Surveyors or by a Decree of a Court of Law; established, re-established, monumented, recovered, found as expressed below:

1	A	B	C	D	E	F	G	H	I	J	K	L	M
2	6		5		4		3		2		1		
3													
4	7		8		9		10		11		12		
5													
6	18		17		16		15		14		13		
7													
8	19		20		21		22		23		24		
9													
10	30		29		28		27		26		25		
11													
12	31		32		33		34		35		36		
13													

NOTE: Not more than 2 corners, all in the same town and range, may be recorded on this certificate.

A. Description of original monument and accessories and/or subsequent restoration:

L-13, Corner common to Section 36, T23N, R8W and Section 1, T22N, R8W: One-quarter section post set in the original government survey by Deputy Surveyor Brink in May of 1838: Corner falls in lake with no witness taken:

10" White Pine called out as Meander corner 5.93 chains East at East margin of lake.

B. Description of corner evidence found and/or method applied in restoring or reestablishing corner:

L-13, Set One-quarter Corner position on line between the found meander corner to the East and the found section corner 1/2 mile to the West. Corner falls in a lagoon and is inaccessible.

Peer Group Reviewed and Approved

Date: 10-21-98

J. Dean Geers, Missaukee Co. Repres

This computed position is accepted as a careful and faithful reestablishment of the position of the original corner.

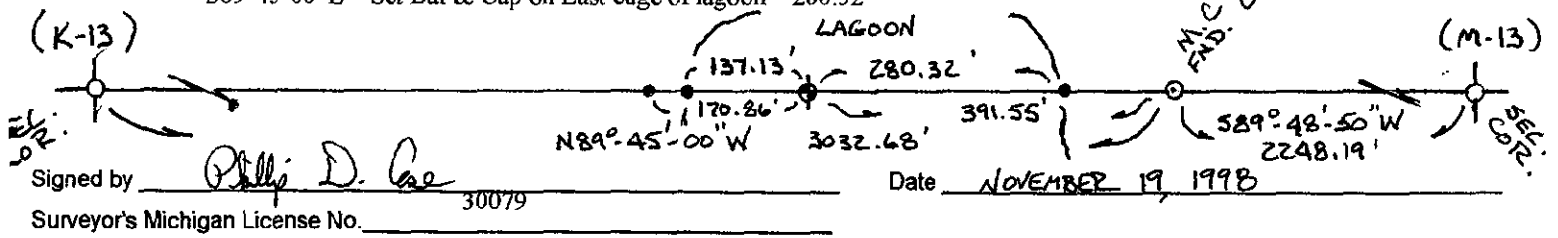


C. Description of monument for corner and accessories established to perpetuate locating the position of the corner:

L-13

Corner Inaccessible - No monument set

- S89°45'00"E - M.C. Concrete Monument, Found ± 121' East of East Edge of Lagoon - 391.55'
- N89°45'00"W - Set Bar & Cap, ± 13' West of West Edge of Lagoon - 137.13'
- N89°45'00"W - Set Bar & Cap ± 1' East CL of W. Northshore Drive - 170.86'
- S89°45'00"E - Set Bar & Cap on East edge of lagoon - 280.32'



Signed by Phillip D. Case
Surveyor's Michigan License No. 30079

Date NOVEMBER 19, 1998