

MICHIGAN
DEPARTMENT OF CONSERVATION
FORESTRY DIVISION

LAND CORNER RECORD

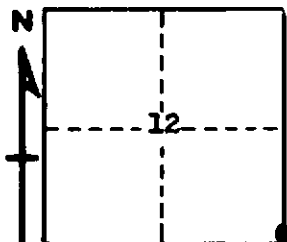
T. 24 N.R. 6 W *- need folder*
T. 24 N.R. 7 W ✓
Missaukee COUNTY

DESCRIPTION OF CORNER Sec. corner common to sections 12-13-7-18

CORNER MONUMENT Set 1" pipe with 4" Aluminum Cap

DATE MONUMENT PLACED AND WITNESSED July 20, 1966

WITNESSES TO CORNER.....



CIRCLE CORNER REGISTERED

12" Elm S 65 W 15.0'
7" H. Maple N 22 E 15.2'

AND

DESCRIPTION IN DETAIL AS TO HOW CORNER WAS LOCATED AND IDENTIFIED OR RESTORED.

This corner was restored at a point on line with 1/8 and 1/4 corners North, making the 1/4 miles of equal length. This places the corner at position indicated by local resident of NE-NE Sec. 13, who saw it at this position before it was excavated during pipeline construction. Appears to have been accepted by local occupation and previous surveys. Best available evidence.

SURVEYOR'S SEAL.

SIGNED *Kenneth J. Ostling* DATE August 10, 1966
REGISTERED LAND SURVEYOR #10068