

MICHIGAN  
DEPARTMENT OF CONSERVATION  
FORESTRY DIVISION

LAND CORNER RECORD

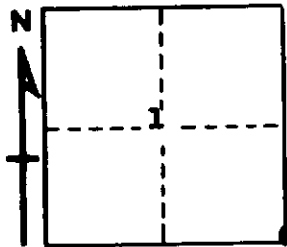
T. 24 N.R. 6 W *- need folder*  
T. 24 N.R. 7 W ✓  
Missaukee COUNTY

DESCRIPTION OF CORNER Sec. Corner common to Sections 6-7-1-12

CORNER MONUMENT Set 1" pipe with 4" Aluminum Cap

DATE MONUMENT PLACED AND WITNESSED July 20, 1966

WITNESSES TO CORNER.....



20" Beech N 67 W 8.9'

22" Beech S 45 E 15.4'

AND

CIRCLE CORNER REGISTERED

DESCRIPTION IN DETAIL AS TO HOW CORNER WAS LOCATED AND IDENTIFIED OR RESTORED.

This corner was found while making a survey in this township. Found  $1\frac{1}{2}$ " pipe at corner, generally in line with those to South and in line with fireline East. No original evidence left, but appears to check OK with other adjacent corners. Buried pipe with our monument.

SURVEYOR'S SEAL

SIGNED Kenneth Ostling DATE August 10, 1966  
REGISTERED LAND SURVEYOR #10068