

STATE OF MICHIGAN  
DEPARTMENT  
OF  
NATURAL RESOURCES

LAND CORNER RECORD

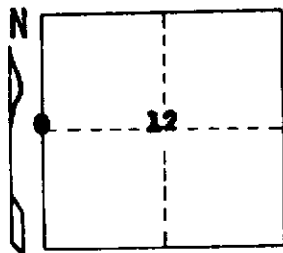
WISSEAUKEE COUNTY  
T 24 N R 8 W

DESCRIPTION OF CORNER W 1/4 Corner, Section 12

CORNER MONUMENT Set DNR Monument

DATE MONUMENT PLACED AND WITNESSED 8-12-71

WITNESSES TO CORNER..... 30" W. Pine Stub 8" hi N 55 E 101.1'



26" W. Pine stump S 14 W 18.5'

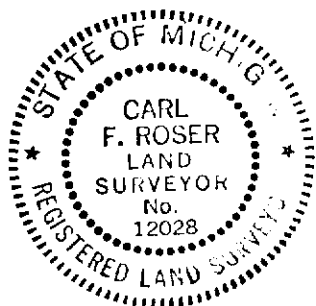
16" Y. Pine stump N 88 W 97.0'

AND N-S Rand Due W. 20.7'

CIRCLE CORNER REGISTERED

DESCRIPTION IN DETAIL AS TO HOW CORNER WAS LOCATED AND IDENTIFIED OR RESTORED.

**Corner reestablished per Standard B.L.M. instructions.**



SURVEYOR'S SEAL

SIGNED Carl F. Roser DATE 8-19-71  
REGISTERED LAND SURVEYOR 12028

DISTRIBUTION:

County Courthouse  
Area Forester (Regions I & II)  
District or Region Surveyor  
Forestry Div., Lansing

R 4047  
Rev. 10/68