

✓

STATE OF MICHIGAN
DEPARTMENT
OF
NATURAL RESOURCES

LAND CORNER RECORD

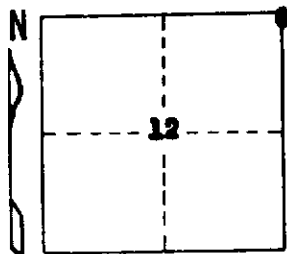
MISSAUKEE COUNTY
T 24 N R 6 W

DESCRIPTION OF CORNER NE ~~1/4~~ corner, Section 12

CORNER MONUMENT Set DNR Monument

DATE MONUMENT PLACED AND WITNESSED 7-29-71

WITNESSES TO CORNER..... 26" Oak S 34 W 75.4'



14" R. Pine S 12 E 114.0'

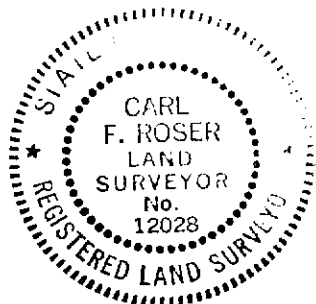
16" R. Pine S 65 E 120.4

AND Ctr. N-S Trail Rd. Due E 68'

CIRCLE CORNER REGISTERED

DESCRIPTION IN DETAIL AS TO HOW CORNER WAS LOCATED AND IDENTIFIED OR RESTORED.

Corner restored from U.S.B.T. stumps NE (Y. Pine) & SE (Y. Pine) and U.S. stump roots NW (V. Pine).



SURVEYOR'S SEAL

SIGNED Carl F. Roser DATE 8-4-71
REGISTERED LAND SURVEYOR 12028

DISTRIBUTION:

County Courthouse
Area Forester (Regions I & II)
District or Region Surveyor
Forestry Div., Lansing

R 4047
Rev. 10/68