

STATE OF MICHIGAN
DEPARTMENT
OF
NATURAL RESOURCES

LAND CORNER RECORD

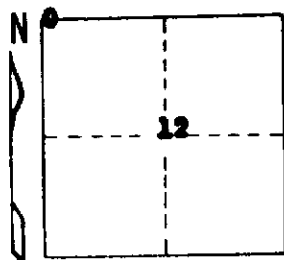
MISSAUKEE COUNTY
T 24 N R 6 W

DESCRIPTION OF CORNER NW corner of Sec. 12

CORNER MONUMENT Set Std DNR Monument & small 3" Cedar Post

DATE MONUMENT PLACED AND WITNESSED 8-18-71

WITNESSES TO CORNER..... 18" R. Pine S 54 W 20.4'



5" R. pine S 52 E 35.0'

3" Balsam N 31 W 17.3'

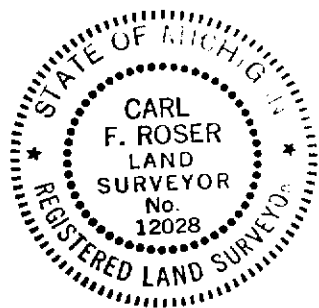
AND Ctr. Stream Due W. 54' ±
Ctr. Stream Due S. 243' ±

CIRCLE CORNER REGISTERED

N-S Random Due W 41'

DESCRIPTION IN DETAIL AS TO HOW CORNER WAS LOCATED AND IDENTIFIED OR RESTORED.

Corner reestablished per standard BLM instructions (double proportion for one mile N, S, E, & W). There is something erroneous with U.S. Stream and Swamp ties in the immediate vicinity of this corner.



SURVEYOR'S SEAL

SIGNED

Carl F. Roser

DATE

8-23-71

DISTRIBUTION:

REGISTERED LAND SURVEYOR

#12028

County Courthouse
Area Forester (Regions I & II)
District or Region Surveyor
Forestry Div., Lansing

R 4047
Rev. 10/68