

MICHIGAN
DEPARTMENT OF CONSERVATION
FORESTRY DIVISION

LAND CORNER RECORD

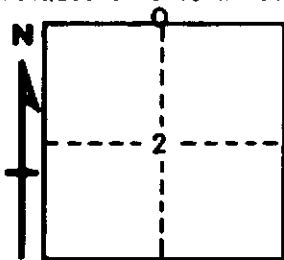
T. 24 N.R. 7 W.
T. 25 N.R. 7 W. MISSAUKEE
KALKASKA COUNTY

DESCRIPTION OF CORNER 1/4 CORNER COMMON TO SECTIONS 2 - 35

CORNER MONUMENT SET 1" PIPE WITH 4" ALUMINUM CAP

DATE MONUMENT PLACED AND WITNESSED MAY 11, 1965

WITNESSES TO CORNER.....



CIRCLE CORNER REGISTERED

	<u>14" R. OAK</u>	<u>N 24 E</u>	<u>71.2</u>
	<u>TRIPLE 10" R. OAK</u>	<u>S 72 W</u>	<u>68.8</u>
<u>AND</u>	<u>OLD NBT 24" W. PINE</u>	<u>N 3 W</u>	<u>7.2</u>

DESCRIPTION IN DETAIL AS TO HOW CORNER WAS LOCATED AND IDENTIFIED OR RESTORED.

THIS CORNER WAS FOUND WHILE MAKING A SURVEY IN THIS AREA. FOUND 3/4" PIPE IN CONCRETE CYLINDER AT CORNER FACED BY VERY OLD N.B.T. REMAINS FOR TWO POSSIBLE U.S.B.T. STUMPS IN PLACE. FALLS WITHIN 10 LINKS OF MIDPOINT ON LINE BETWEEN CORNERS. BEST EVIDENCE OF PROPER LOCATION FOR THIS CORNER.

SURVEYOR'S SEAL

SIGNED *Kenneth J. Osting* DATE MAY 26, 1965
REGISTERED LAND SURVEYOR #20068