

MICHIGAN
DEPARTMENT OF CONSERVATION
FORESTRY DIVISION

LAND CORNER RECORD

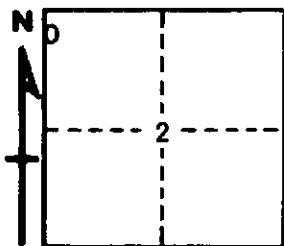
T. 24 N.R. 7 W.
T. 25 N.R. 7 W. MISSAUKEE
KALKASKA COUNTY

DESCRIPTION OF CORNER SECTION CORNER COMMON TO SECTIONS 2 - 3 - 34 - 35

CORNER MONUMENT SET 1" PIPE WITH 4" ALUMINUM CAP

DATE MONUMENT PLACED AND WITNESSED MAY 11, 1965

WITNESSES TO CORNER.....



CIRCLE CORNER REGISTERED

	OLD N.B.T. 20" W. PINE STP	N	2	W.	28.0
	TWIN 12" R. OAK	N	40	W.	25.7
AND	TWIN 12" R. OAK	S	45	E.	28.4

DESCRIPTION IN DETAIL AS TO HOW CORNER WAS LOCATED AND IDENTIFIED OR RESTORED.

THIS CORNER WAS FOUND WHILE MAKING A SURVEY IN THIS AREA. FOUND 3/4" PIPE SUR-
ROUNDED BY 4" CYLINDER OF CONCRETE AT CORNER. THIS IS FACED BY VERY OLD N.B.T.--BUT
NOT SURE IF IT IS FARGO CORNER OR SURVEYOR MERRILL'S. AT LEAST ONE PROBABLE O.B.T.
STUMP IN PLACE N. E. COULD FIND NO REASON TO QUESTION THIS CORNER AND WAS CONSIDERED
ACCEPTABLE.

SURVEYOR'S SEAL

SIGNED *Kenneth J. Ostling* DATE MAY 26, 1965
REGISTERED LAND SURVEYOR #10068